

BESPOKE INTERIOR DESIGN

PHUC MY GIA



🏠 **Phuc My Gia Custom Furniture Co., Ltd**

📍 No 39, 1A Highway, Hiep Binh Phuoc Ward, Thu Duc City, Ho Chi Minh City, VN

No 264, Tran Nao Street, An Khanh Ward, District 2, Ho Chi Minh City, VN

☎ 02866.897.666 - 02866.897.888

🌐 phucmygia.vn





PHÚC MỸ GIA

Phuc My Gia Custom Furniture Co., Ltd

Consult, Design & Manufacturing

====

Furniture retail supply & Interior decoration materials

====

Providing decorative Tiles, Stones & Sanitary Equipments

COMPANY HISTORY

Phuc My Gia Custom Furniture Co., Ltd specializes in custom furniture solutions, focusing on research, design development, and manufacturing. From the design stage, we offer customers a complete range of custom design options, including kitchen cabinets, bathroom cabinets, built-in cabinets, wine cabinets, TV cabinets, bedside tables, coffee tables, and other furniture.

Aligned with the "improving the quality of life" philosophy of the Phuc My Gia brand, we meet customers' living space needs by customizing entire homes and designing products. We provide comprehensive solutions from the kitchen to the whole house for families who trust and choose us. Phuc My Gia's customer care service operates with the concept of "customer first," prioritizing service and product quality, embracing learning, innovation, and continuous effort without fear of challenges. We hope to accompany all employees, partners, and customers on the path of growth and development.



Pic 1: **Factory Sanyang 1**



Pic 2: **Factory Sanyang 2**



Pic 3: **Factory Goldenland**



COMPREHENSIVE
FURNITURE SOLUTIONS



NABEL

NUOMI

AQUA

JOMOO
START YOUR SMART LIFE

TOTO

SSWW

SANCI

VICOSTONE

Dongwha

Teka

HAFELE

LG

Jowat
Adhesives

NIPPON
PAINT

WOODLAND

LEGEND

A&T
SKY GARDEN

MAESTRO

PPD

MASTERISE HOMES

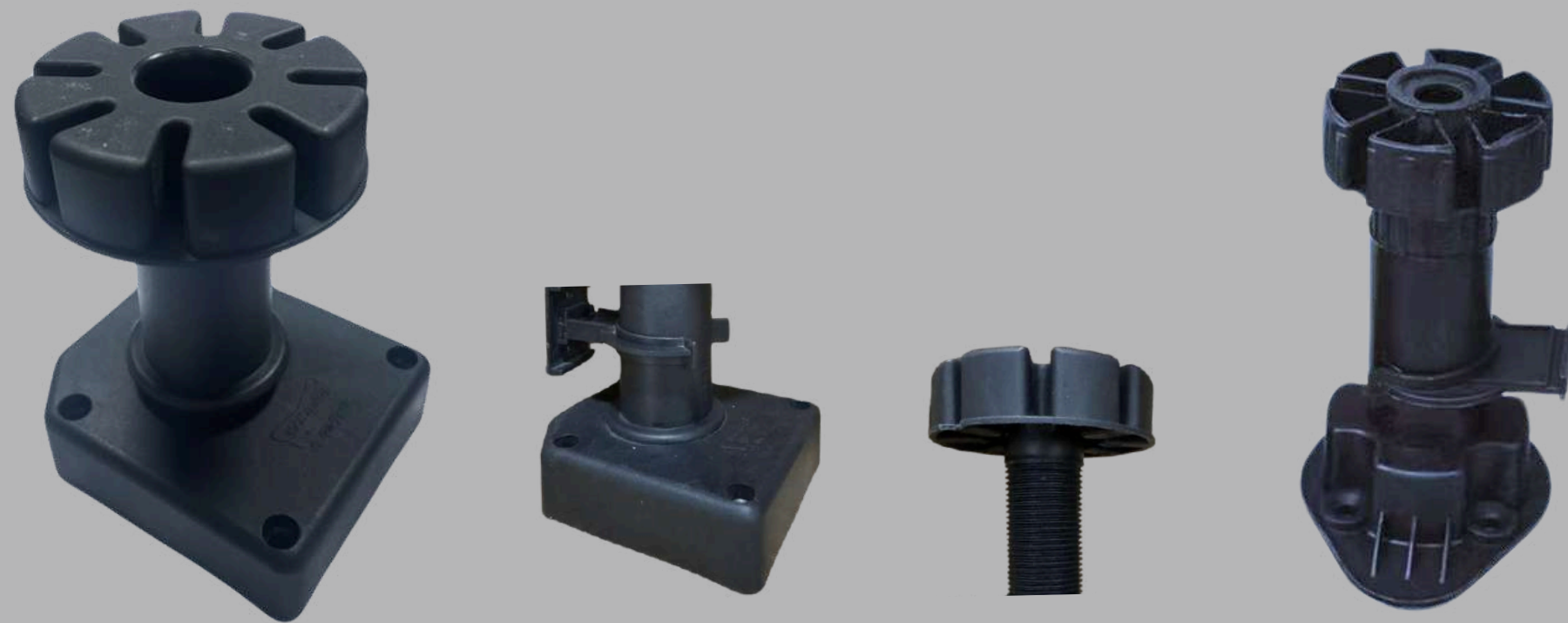
NEW CUSTOMIZABLE CABINETS

The cabinet body is customized in various styles to meet the specific requirements of each design. Some of the most common cabinet body types are listed below. Additionally, upgrading to a cabinet line with adjustable height auxiliary legs enhances durability and load-bearing capacity.



NEW CUSTOMIZABLE CABINETS

Adjustable cabinet feet from the ABS brand are durable and offer high load-bearing capacity. They are the ideal solution for installation on uneven surfaces.



KITCHEN COUNTERTOPS

QUALITY

To ensure stability, we use quality quartz or sintered stone countertops from reputable brands, featuring strong load-bearing capacity and high durability.



MORDERN SINK

SOPHISTICATED

The seamless sink design is easy to clean and safe, making the cabinet structure neater and more durable during use.



HARDWARE ACCESSORIES

SMART

All PMG cabinet products, along with their accessories—such as dry food cabinets and dish racks—are designed to be the most modern and convenient for customers. With excellent quality and antibacterial features, these accessories fill empty spaces most suitably and perfectly.





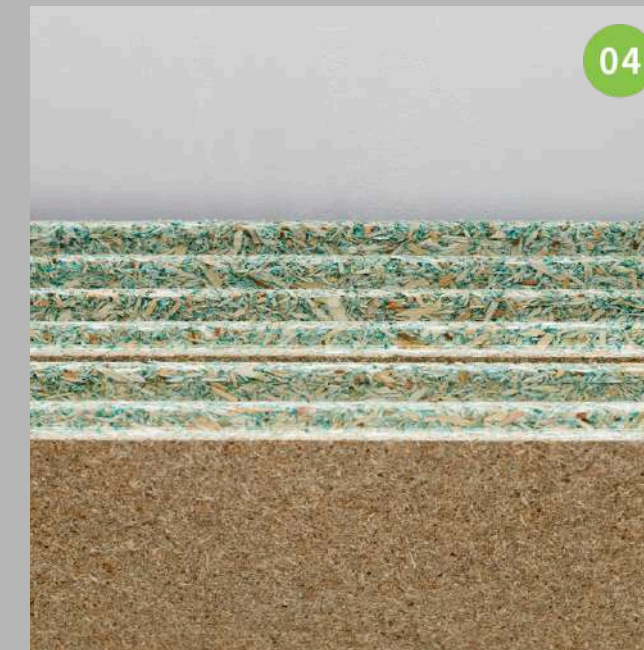
MFC



MDF



HDF



MFC MOISTURE



MDF - HDF MOISTURE



PLYWOOD

NEW PRODUCTS

Non- Formaldehyde - Environmentally **F-OSB (Fine Oriented Strand Board)**

F-OSB is a decorative surface board specifically designed for the interior industry. Its structure consists of five layers of long planks arranged diagonally, both lengthwise and crosswise, with the two outer surface layers made of smooth material.

SUPER FLAT SURFACE

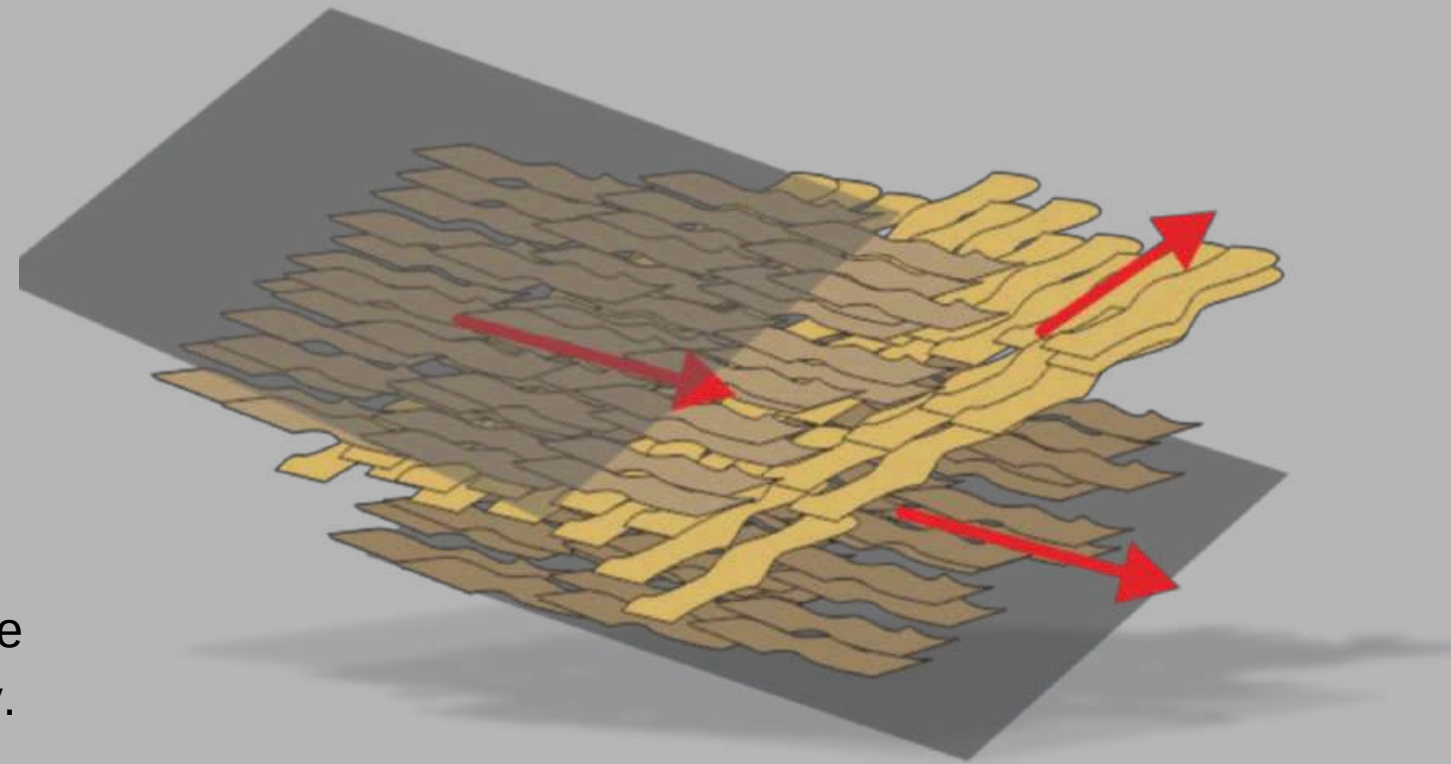
Surface has no holes, glue marks, or uneven sanding, allowing direct application of decorative layers such as Melamine, PET, PP, or imitation veneer.

GOOD NAIL HOLDING FORCE

Good material and solid structure, with exquisite processing further enhancing the strong nail-holding ability.

GOOD MOISTURE RESISTANT

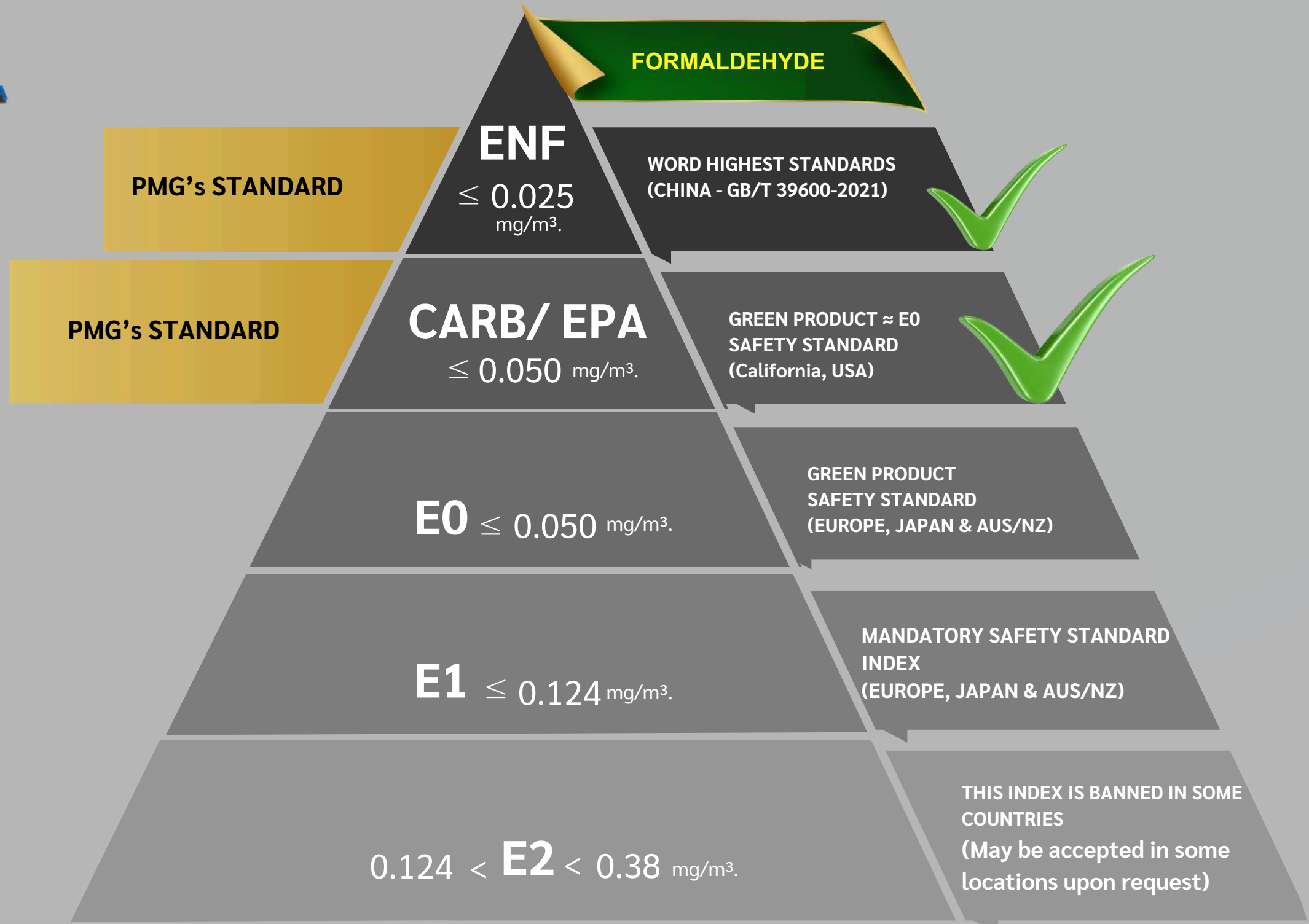
F-OSB uses polyurethane adhesive as a raw material for producing sealants and waterproof paints.



5 layer interwoven

F-OSB





EN717-1: European standard test method for determining Formaldehyde emissions.



MELAMINE

PET (Poly thylene Terephthalate)

FURNITURE PVC VACUUM

HARDWARE ACCESSORIES

PMG

MELAMINE COLLECTION

Melamine color collection is friendly and economical
Brings to the living space a gentle and rustic feel close to nature.



E8029



E8033



E8032



E8031



S3003-1



E8035-3



E8019-1



E8026-2



E6889



E8039-1



E8034-1



E8036-2



E8035-2



E8037-1



E8019-2



E8026-1



E8040-2



E6914

Catalog melamine - Actual Color



MELAMINE

Save & Popular

Corresponding illustration colors



E8026-3



PET

Health - Environmentally

“BREATHING” PLATE

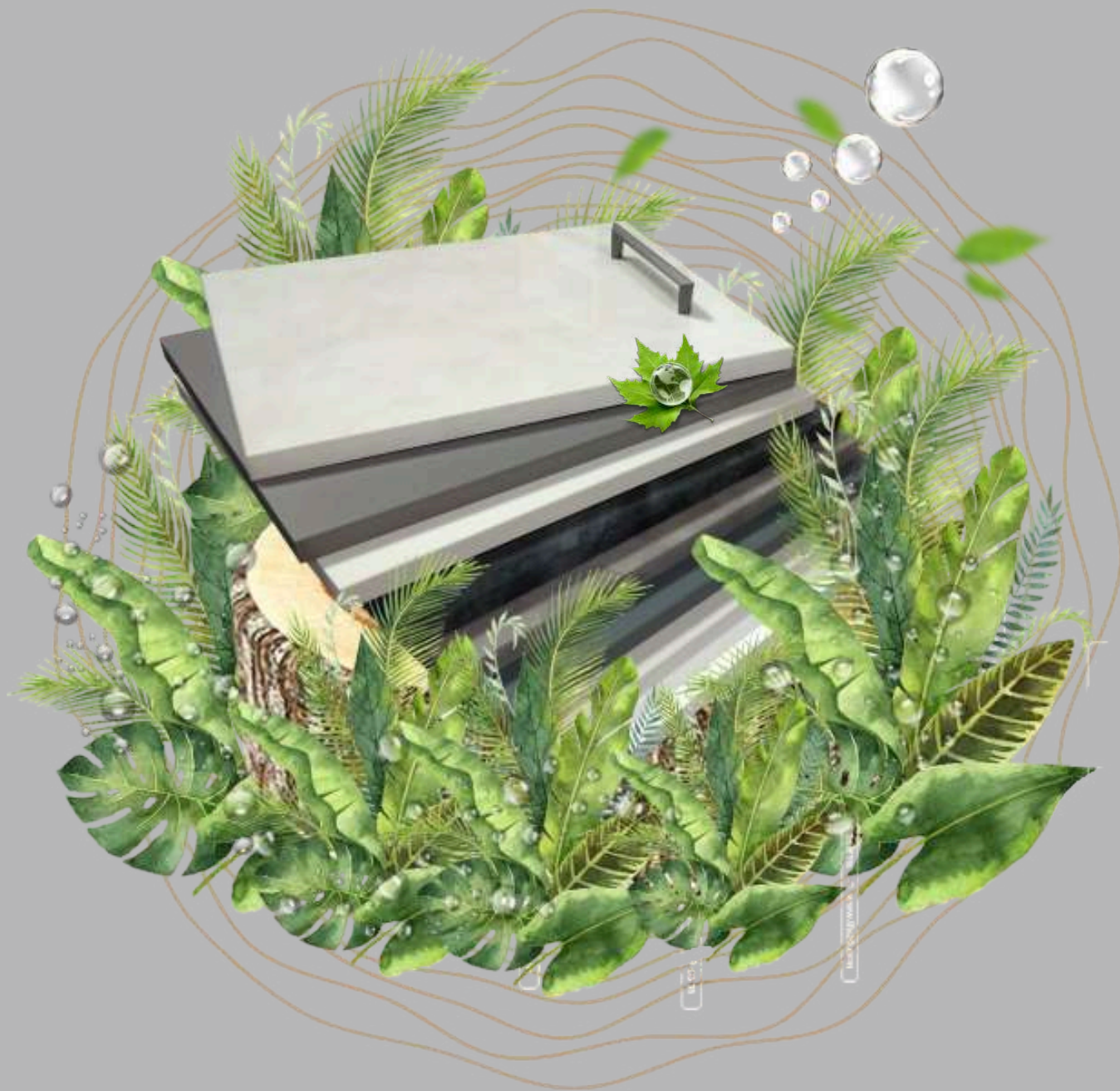
The surface layer of the PET sheet is PETG, which meets US FDA food contact standards for environmental safety and is known as a "breathable sheet." PET plastic is widely used in food packaging, beverages, medical products, and the furniture industry.

GLOSSY SURFACE

Mirror-like glossy surface, luxurious, anti-fingerprint, yellowing.

MATTE SURFACE

Smooth matte surface. When placing your hand on the surface of the material, it creates a pleasant and comfortable feeling.



PET (Poly thylene Terephthalate)

Matte & Glossy Surface



PET HL013-M
MATTE SURFACE



PET HL609-GX
LINE PATTERN SURFACE



PET HL625-M
MATTE SURFACE



PET HL625-H
GLOSSY SURFACE



PET HL338-M
MATTE SURFACE



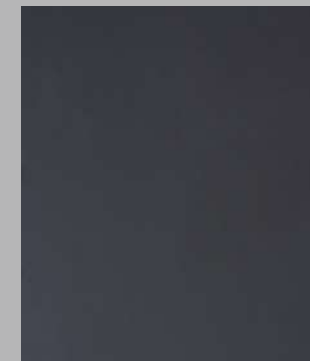
PET HL338-H
GLOSSY SURFACE



PET HL629-M
MATTE SURFACE



PET HL603-GX
STRIPED PATTERN



PET HL650-M
MATTE SURFACE



PET LH604-GX
BTRIPED PATTERN



PET HL430-M
MATTE SURFACE



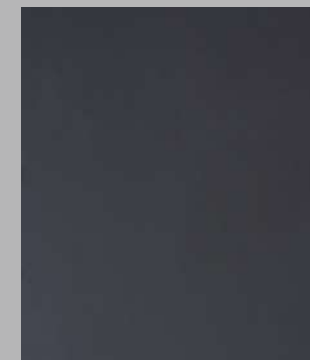
PET HL430-H
GLOSSY SURFACE



PET HL370-M
MATTE SURFACE



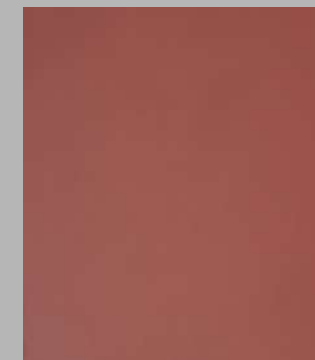
PET HL901-GX
BSCRATCHED METAL SURFACE



PET HL650-M
MATTE SURFACE



PET HL905-GX
BSCRATCHED METAL SURFACE



PET HL980-M
MATTE SURFACE



PET HL980-H
GLOSSY SURFACE

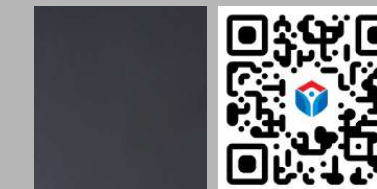


PET

PET gives the interior a modern and luxurious feel. The surface is minimalist yet sophisticated, staying on trend, creating a living space that feels more open, environmentally friendly, and safe for consumers' health.

Modern - Luxury

Corresponding illustration color



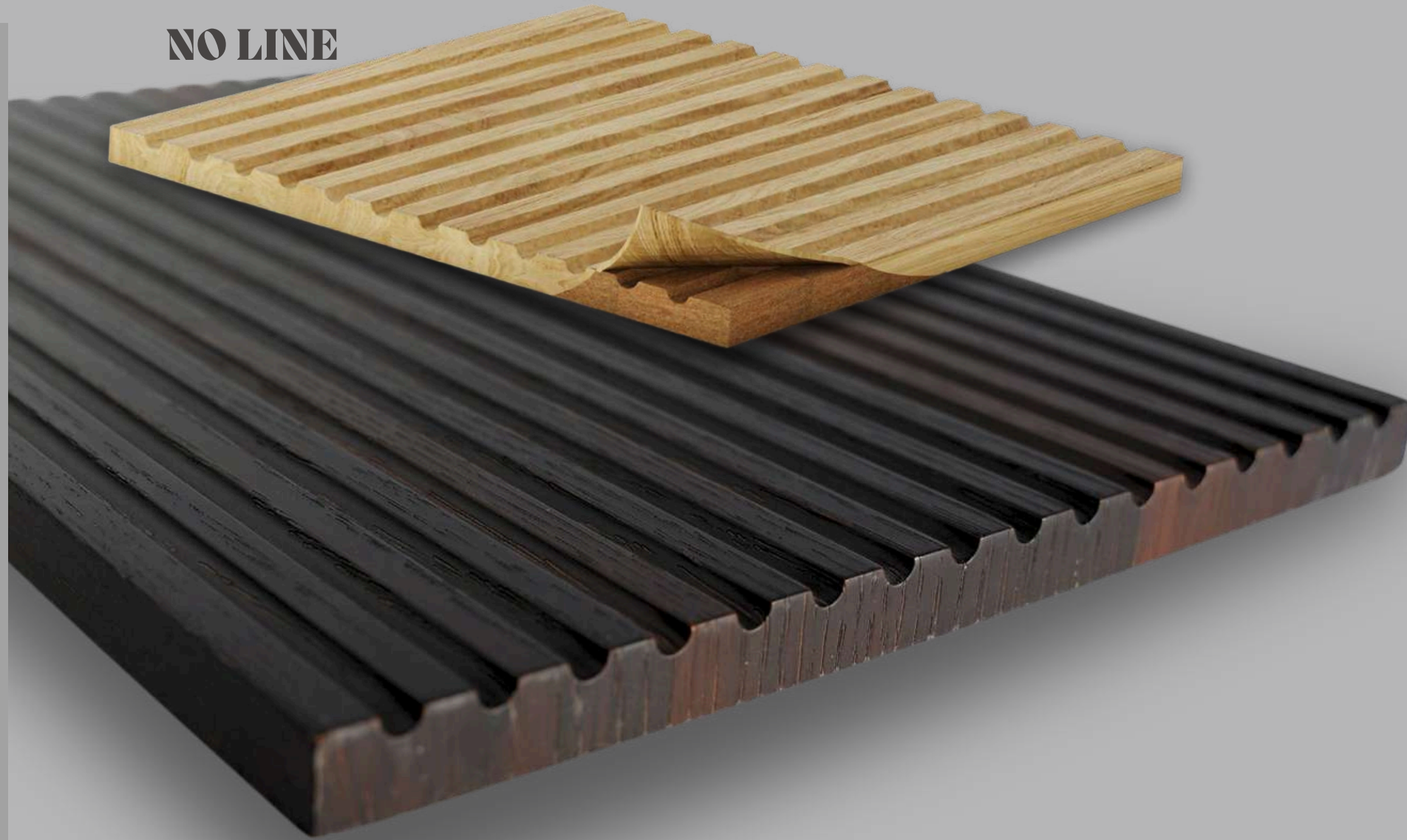
PET HL650-M



3D Profile Cabinet Door Panel

PVC VACUUM DOOR

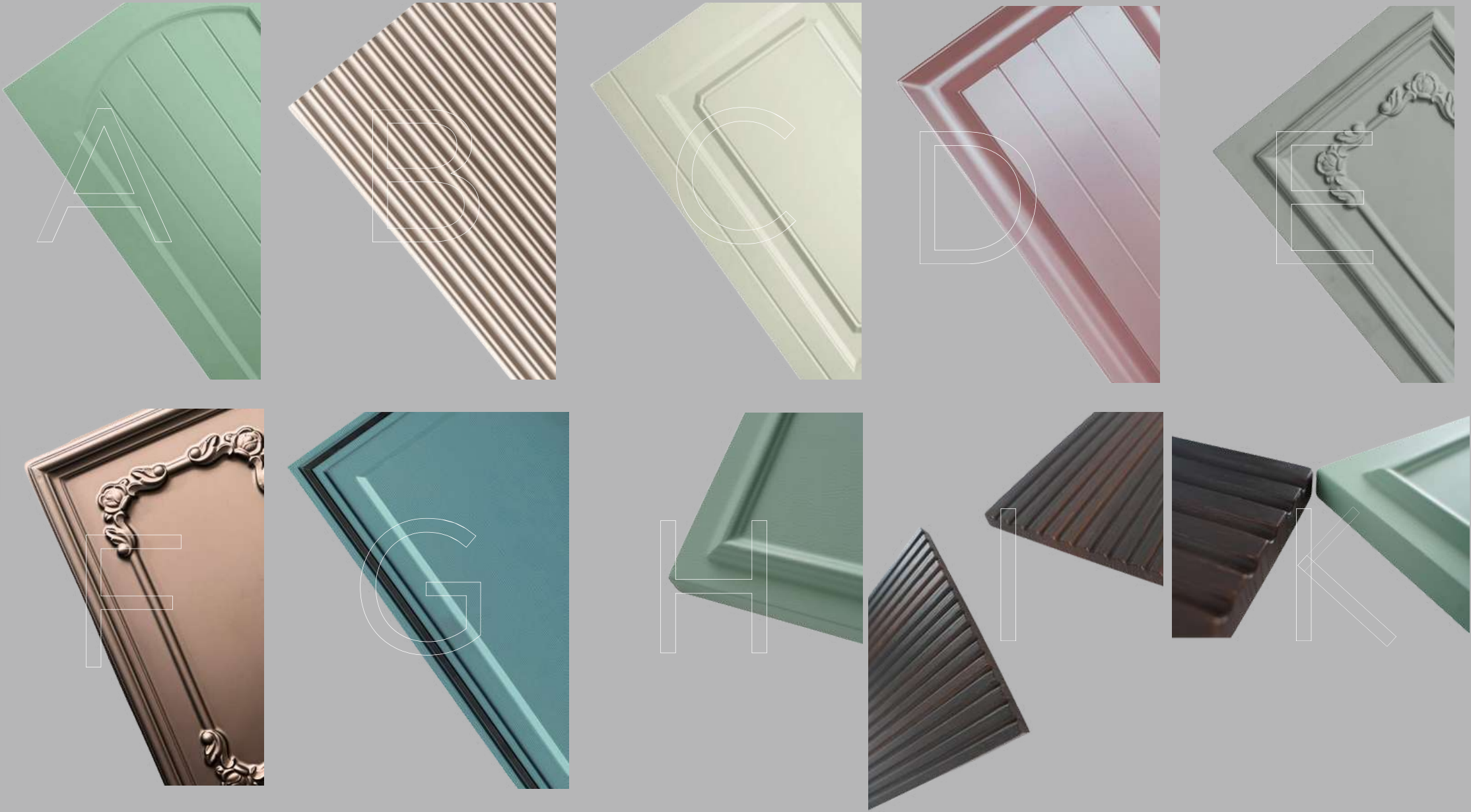
Standing out with its sculptural lines, diverse patterns, and 3D-profile cabinet doors, Phuc My Gia is a superior material in the custom furniture industry.



NO LINE

3D Contour Cabinet Door

Product line: 3D contour cabinet door
Style: Neoclassical - luxury
Technology: Vacuum from Germany
Material: PVC film + imported PUR glue





PMG-D02



PMG-D03



PMG-D04



PMG-D05-1



PMG-D05-2



PMG-D06-1



PMG-D17



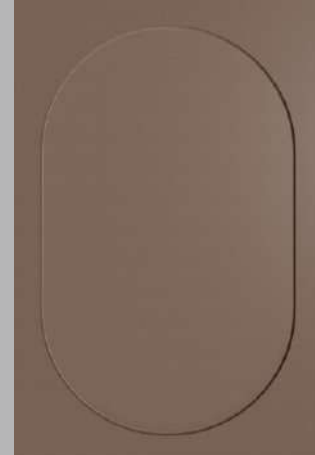
PMG-D18



PMG-D25-1



PMG-25



PMG-D28



PMG-D29-1
Vertical striped Glass



PMG-D06-2



PMG-D07



PMG-D08



PMG-D09



PMG-D10



PMG-D11



PMG-D29-1
Horizontal Striped Glass



PMG-D29-1
Plain Glass



PMG-D29
Non - Glass



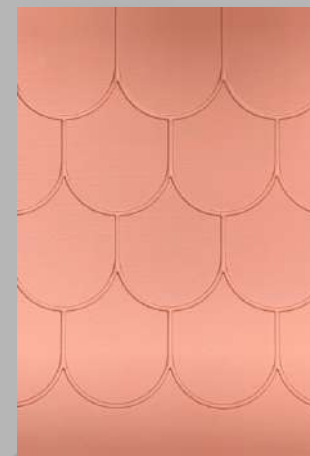
PMG-D31



PMG-D31-1



PMG-D32



PMG-D12



PMG-D13



PMG-D14



PMG-D15-1



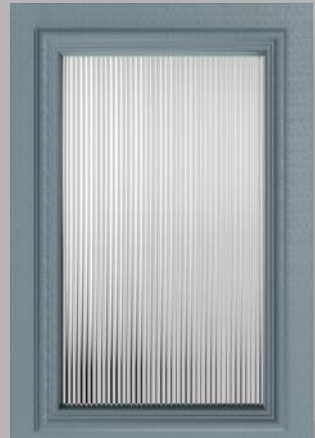
PMG-D15-2



PMG-D16



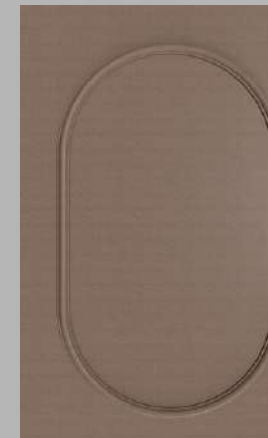
PMG-D33



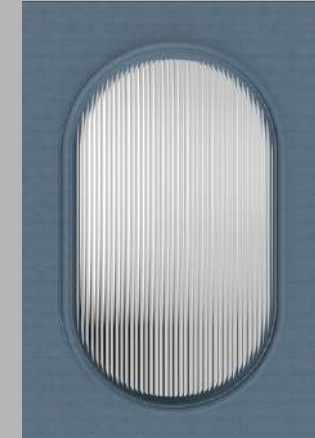
PMG-D33-1



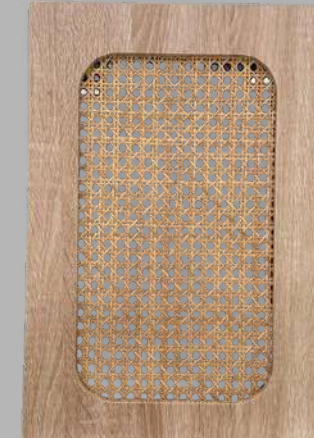
PMG-D33-2



PMG-D34



Vertical
striped Glass



PMG-D35



PMG-D19

PMG-D20

PMG-D21

PMG-D22

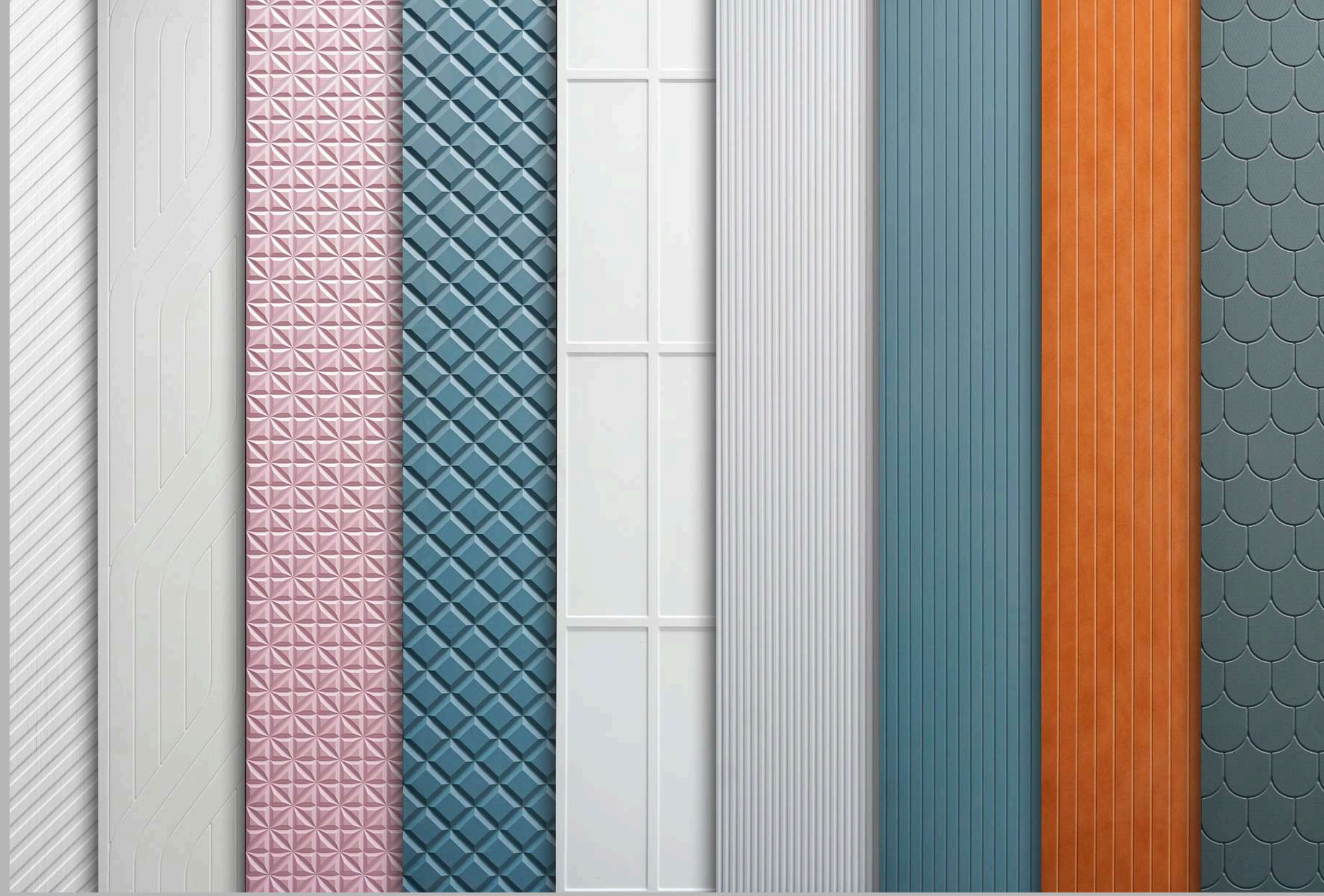
PMG-D23

PMG-D24

PMG-D26

PMG-D27

Catalog PVC - Actual Color







PVC VACUUM

NEOCLASSICAL STYLE

Corresponding illustrated cabinet door code





PVC VACUUM

Odorless - Multi style

Corresponding illustrated cabinet door code



PMG-D32



F8021





PVC - VACUUM

Odorless - Diversity Style

Corresponding illustrated cabinet door code



PMG-D32



F8021



PP COLLECTION

PP color collection with natural and realistic wood grain effect.
Modern, diverse, sophisticated and luxurious colors



HGF0128-7



HGF016701-1



HGF0166149-1



HGF016701-2



HGF0166149-2



HY09162227-1



HY09162227-3



HY09162227-2



HY09162227-4



HY09162228-1



HY09162228-2



HY09162228-3



HY09162229-1



HY09162229-2



HY09162302-1



HY09162302-2



HY09162302-3



HY09169301-2





PP

Sophisticated- Luxury

Corresponding Illustration color



HGF016701-2







PP

Sophisticated - Luxury

Corresponding Illustration color



HGF0166149-1





PRODUCT NAME: QUARTZ
BRANCH NAME: VICOSTONE

Stone Kitchen Countertop - Kitchen Island

QUARTZ



GROUP A



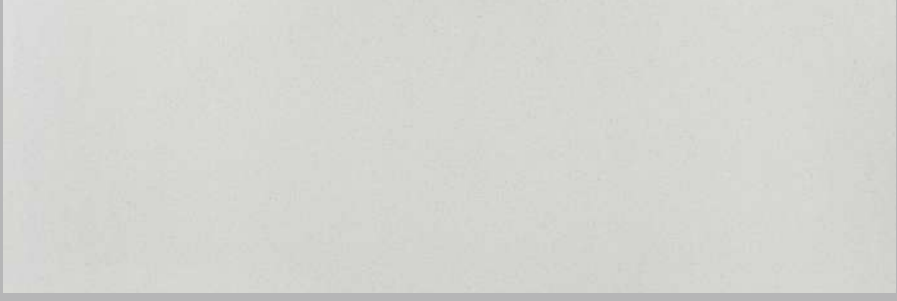
BQ9290 MANGOSTEEN



BQ262 CRYSTAL BLACK



BQ300 GALAXY WHITE



BQ900 CRYSTAL SA

GROUP A



BQ940 CRYSTAL PEPPER



BQ2607



BQ2605 DENALI

GROUP B



BQ8437 JURA GREY



BQ8100 MOCHA CREAMA



BQ8440 BIANCO VENATO

GROUP B



BQ8446 GREY SAVOIE



BQ8712 GREY EMPERADOR

GROUP C



BQ9441 COLD SPRING



BQ8812 JAVA NOIR



BQ8583 AKOYA



SINTERED STONE

LARGE & SEAMLESS FORMAT





EXCLUSIVE DESIGN

ITALIAN DESIGN



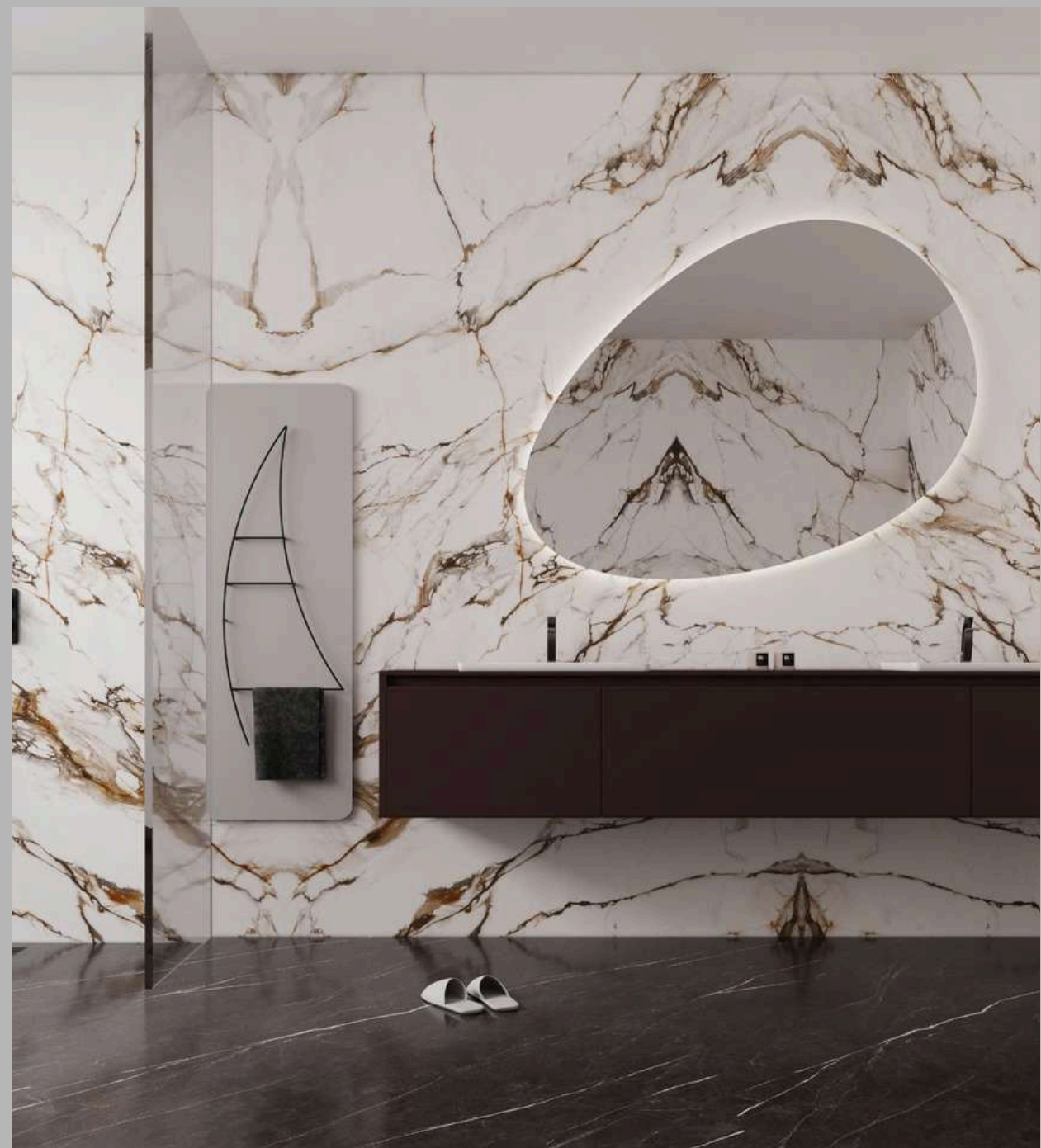










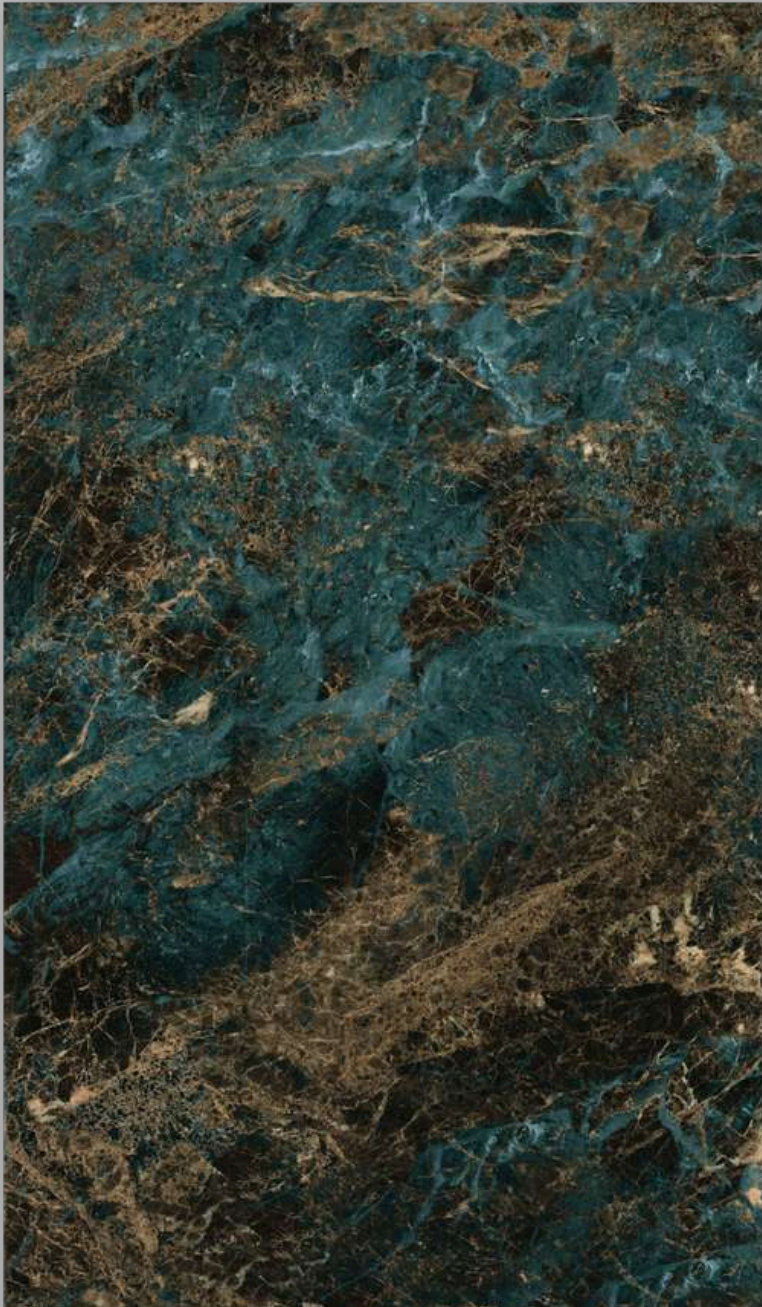


PETG STONE VEINING

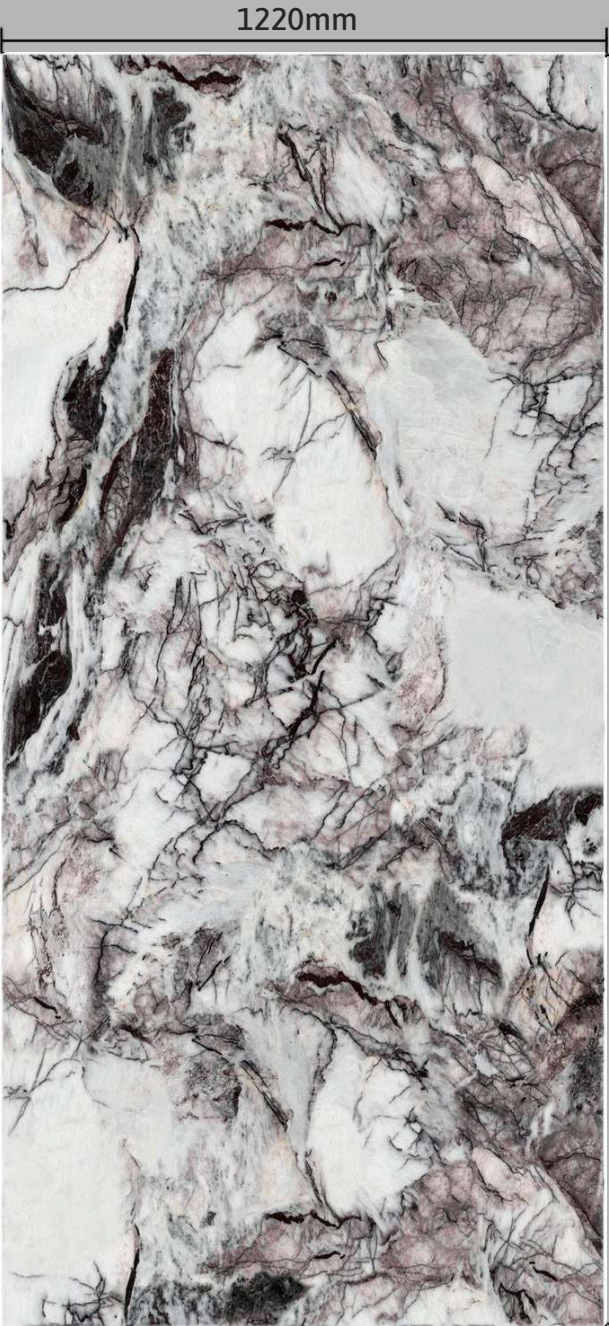
COLLECTION

APPLICATIONS

- DECORATIVE PANELING
- CUSTOM FURNITURE



PETG (Polyethylene Terephthalate Glycol): PETG is an improved form of PET, produced by adding a small amount of glycol during the manufacturing process. This glycol improves some of the properties of PET plastic, especially the processability and mechanical properties of the material. PETG is highly transparent, but due to its better mechanical properties than PET, it is often used in products that require higher strength and toughness, such as partitions, suitable for applications that require complex processing and flexibility in the production of products such as interior decoration, 3D printing, and protective packaging.



1220mm

3000mm



SIZE: 8*1220*3000mm
8*1220*6000mm (Order)



Scratches Resistant



Odorless



Anti - Yellowing



Dustproof



PETG - PMG 01



PETG - PMG 02



PETG - PMG 03



PETG - PMG 04



PETG - PMG 05



PETG - PMG 06



PETG - PMG 07



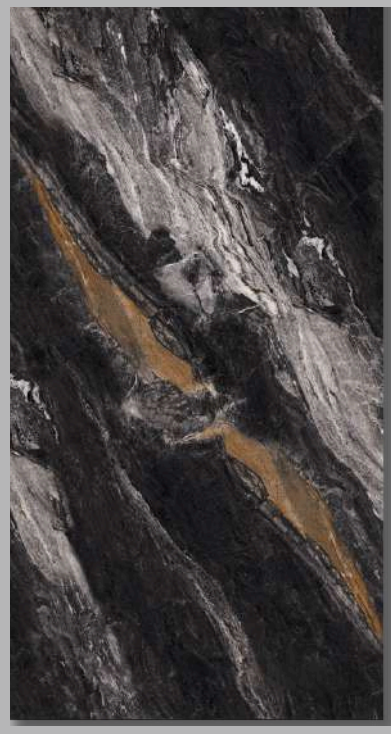
PETG - PMG 08



PETG - PMG 09



PETG - PMG 10



PETG - PMG 11



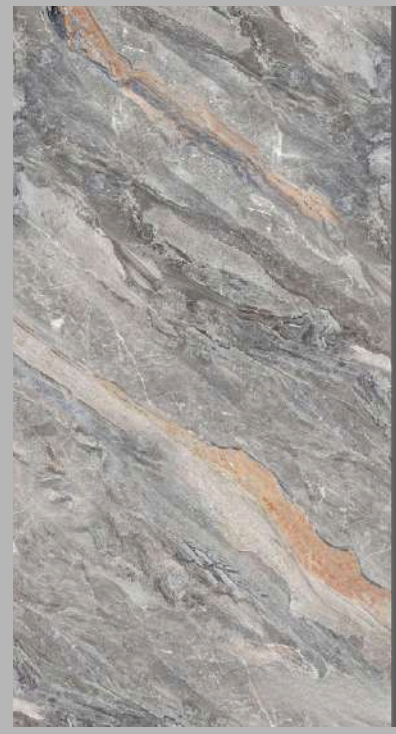
PETG - PMG 12



PETG - PMG 13



PETG - PMG 14



PETG - PMG 15



PETG - PMG 16



PETG - PMG 17



PETG - PMG 18



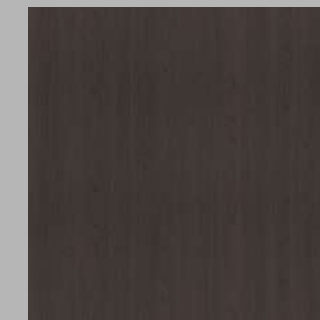
PETG - PMG 19



PETG - PMG 20



CUSTOM FURNITURE PETG & PP



PP HGF0166149-2



PETG - PMG 04



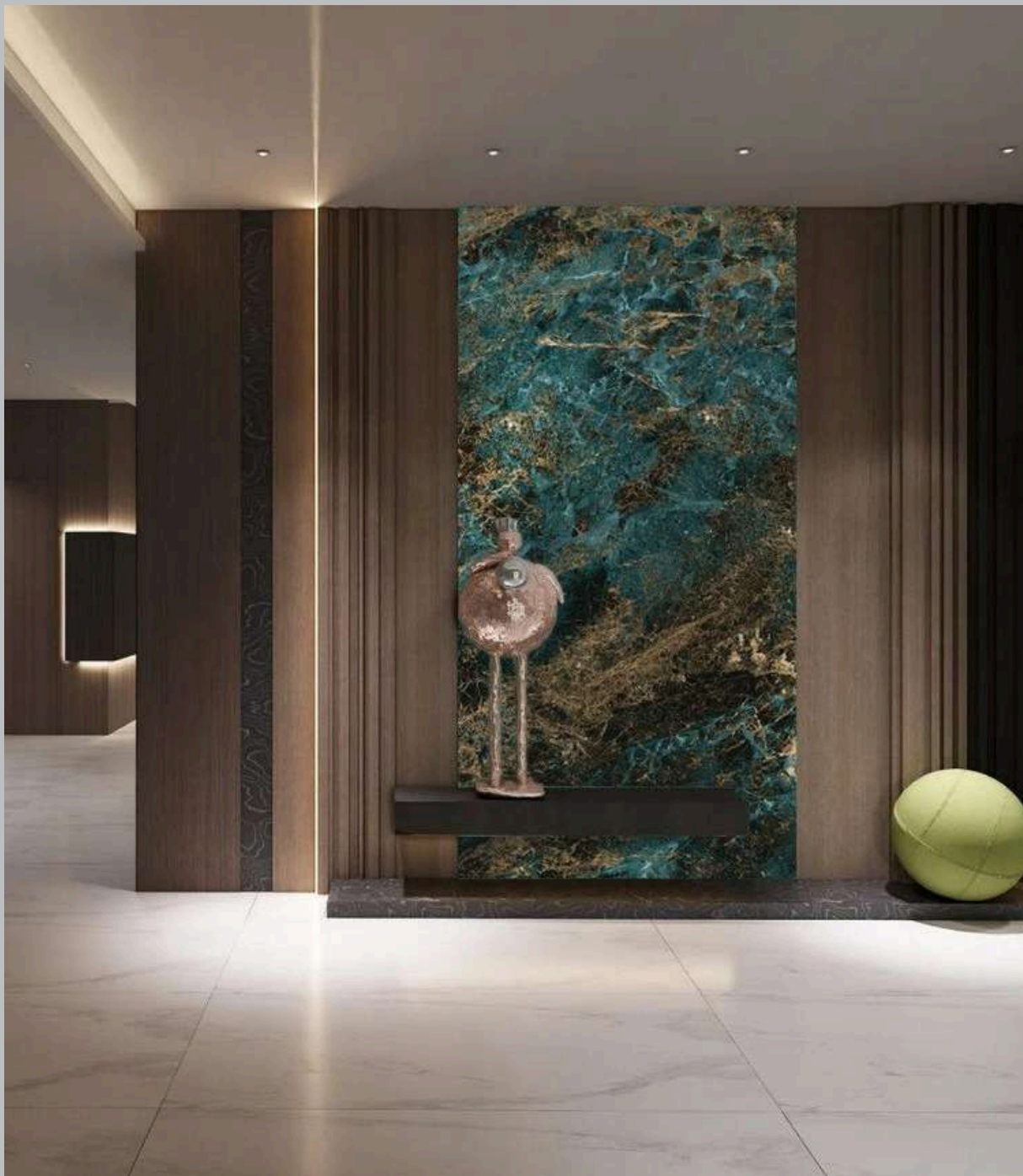
CUSTOM FURNITURE PETG & PP

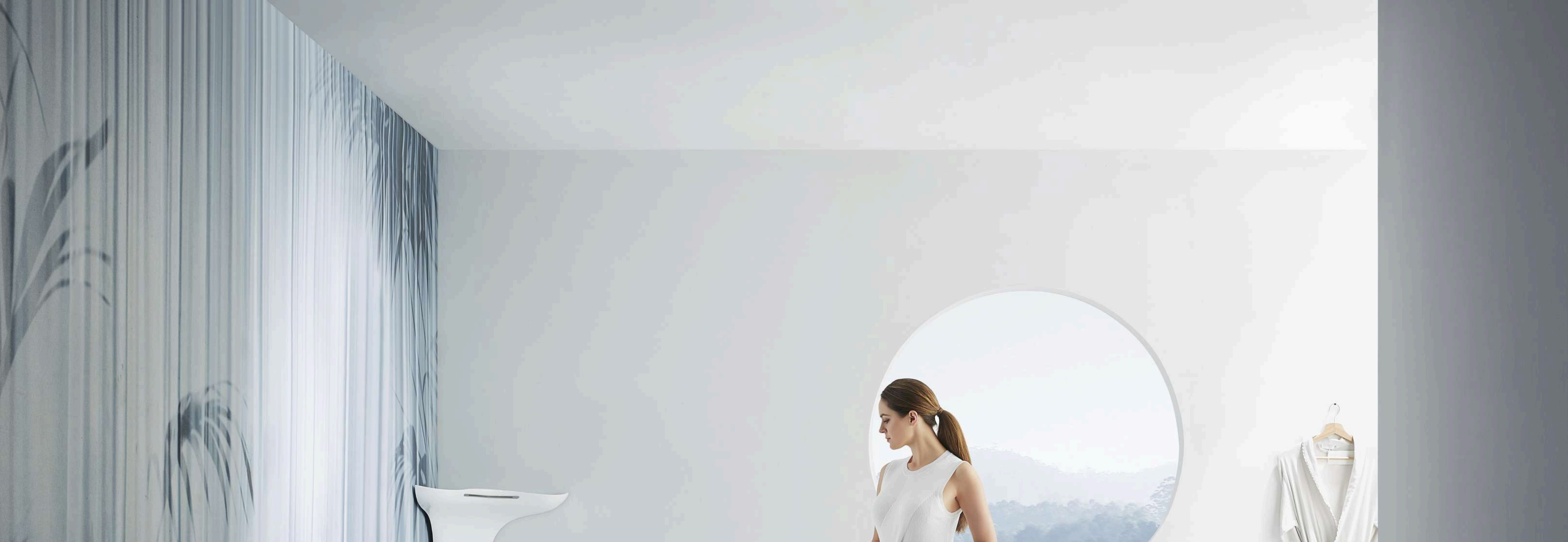


PP HY09162229-2



PETG - PMG 15









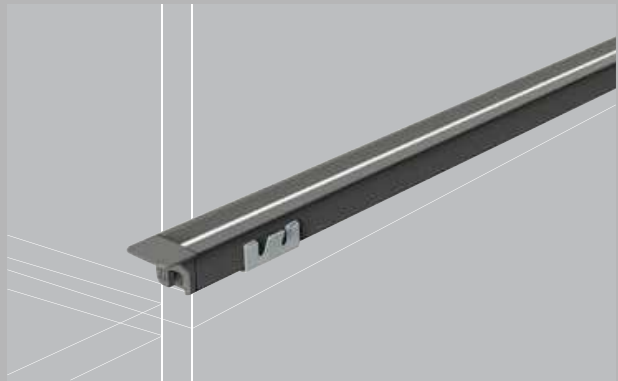
BATHTUB & BATHROOM EQUIPMENTS



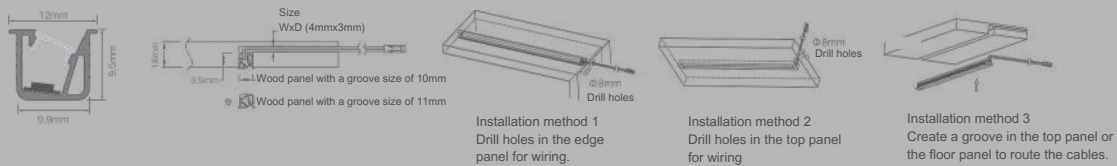


LED LIGHT BAR TILT LIGHT(10*10MM)

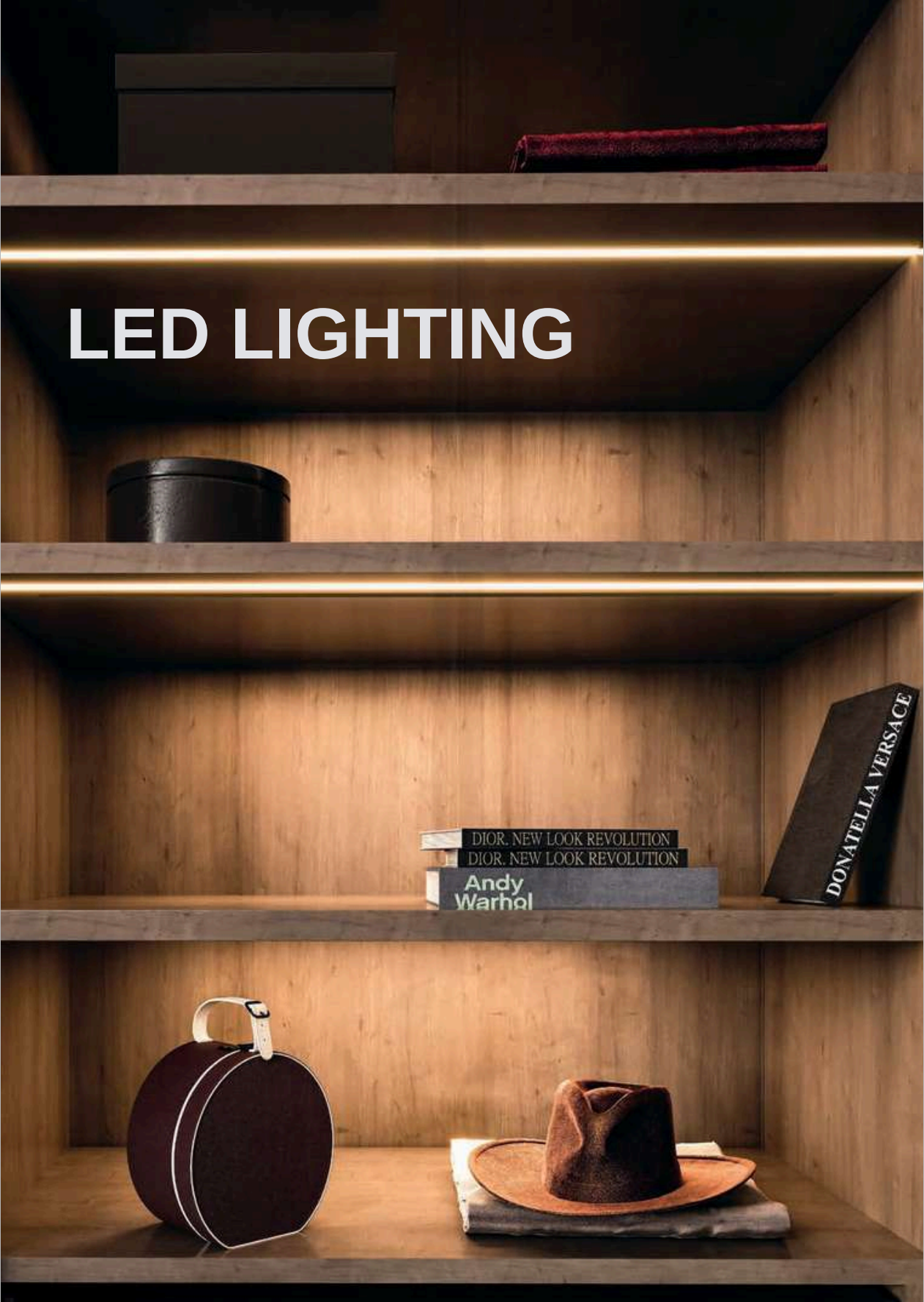
- Adjustable or optional color temperature (3000K. 4000K. 6000K), lighting balance, service life over 54000 hours.
- Unleaded welding-free technology detachable structure between wire and light.
- Cuttable length.
- PC lampshade,ultra-narrow design and has no crystal points.
- RA>90.



Installation drawing



TEMPERATURE COLOR	CODE	COLOR	SIZE		CAPACITY
4000K	12324063	GREY	600mm		6W
4000K	12324103	GREY	1000mm		10W
4000K	12324183	GREY	1800mm		18W
4000K	12324283	GREY	2800mm		28W



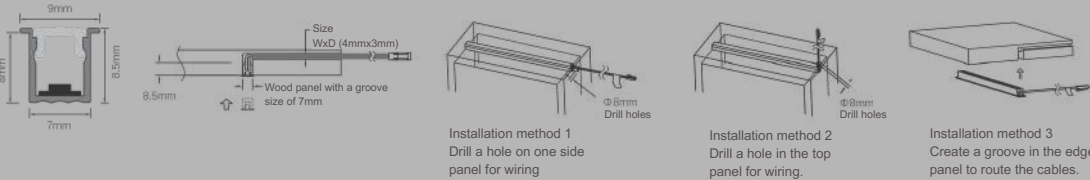
LED LIGHTING

ULTRA NARROW INTEGRATED LED LIGHT BAR (8*10MM)

- Using high quality LED light source, 4000K color temperature, uniform light output, super long life of 70,000 hours.
- Can be used for floor and vertical panel installation, light strips can be cut.
- Ultra-narrow PC lampshade
- Ra>90.



Installation drawing



TEMPERATURE COLOR	CODE	COLOR	SIZE	CAPACITY
4000K	12314065	BLACK MATTE	600mm	6W
4000K	12314105	BLACK MATTE	1000mm	10W
4000K	12314185	BLACK MATTE	1800mm	18W
4000K	12314285	BLACK MATTE	2800mm	28W

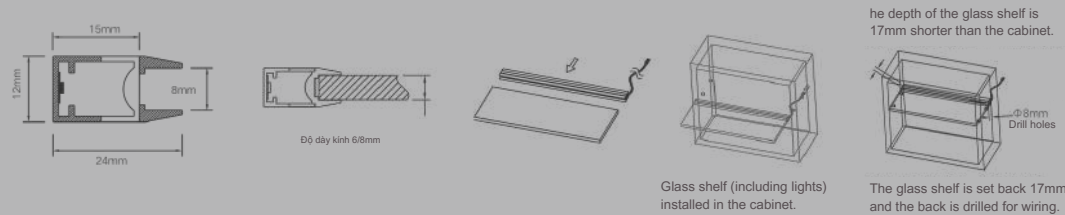


LED LIGHT BAR GLASS SHELF

- Using high quality LED light source, the light output is uniform. Super long life 70,000 hours.
- Three-sided luminous, no bright spots, suitable for 6~8mm glass.
- Can be used for wardrobes, open cabinets, glass back shelves, cut cans
- Ra>90.



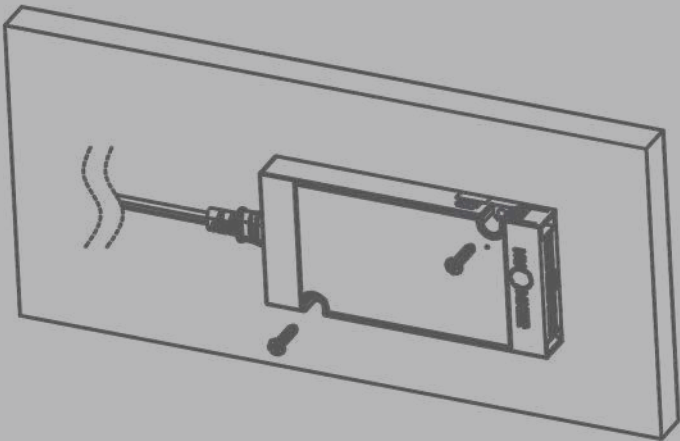
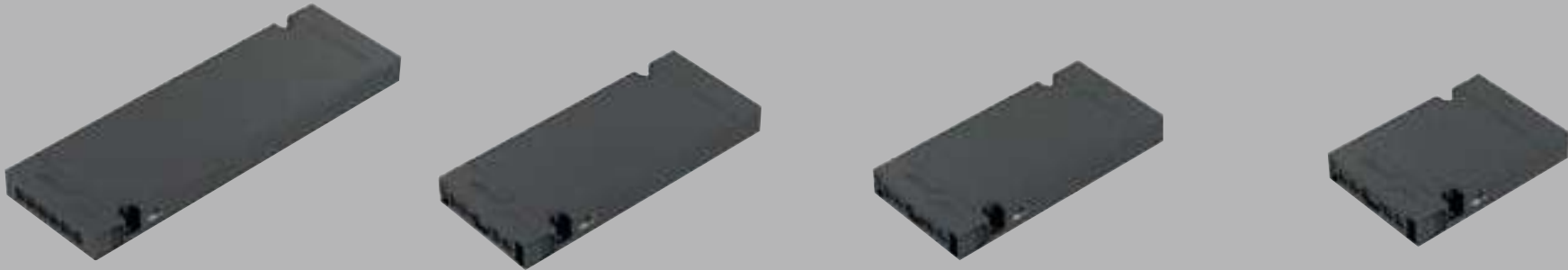
Installation drawing



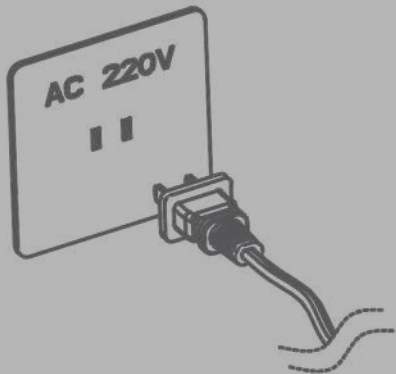
TEMPERATURE COLOR	CODE	COLOR	SIZE	CAPACITY
4000K	12624063	GREY	600mm	6W
4000K	12624083	GREY	800mm	10W

ULTRA-THIN SMART POWER SUPPLY WITHOUT VARIATION

ULTRA-THIN CONSTANT VOLTAGE POWER SOURCE WITH SMART CONTROL



This constant voltage controller should be fixed on the cabinet or wall with screws.



Connect to 220V power source

CODE	SIZE (mm)	COLOR	ALTERNATING CURRENT	OUTPUT VOLTAGE	CAPACITY	OUT-PUT CONTROL
12202036 (LXLD25-12V-36W)	L140xW68xH16.5mm	BLACK	200-240Vac \approx 0.45A 50/60HZ PF \geq 0.5	12V/3A	36W	wired or wireless
12202060 (LXLD25-12V-60W)	L160xW68xH16.5mm	BLACK	200-240Vac \approx 0.7A 50/60HZ PF \geq 0.5	12V/5A	60W	wired or wireless
12202100 (LXLD25-12V-90W)	L215xW68xH16.5mm	BLACK	200-240Vac \approx 1.1A 50/60HZ PF \geq 0.5	12V/8.33A	100W	wired or wireless

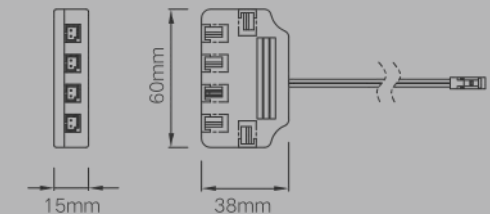
This constant voltage controller should be fixed on the cabinet or wall with screws.

WIRE LED JUNCTION BOX

- Made of high quality ABS material.
- Wire and terminal quality certification, has passed UL certification, RoHS certification, CE certification.



INSTALLATION DRAWING



SPECIFICATIONS

Item code	12281004
Size	0.3M/0.6M/1M
Color	Đen
Material	UL2468, 22AWG

LED CABLE

- Made of high quality ABS material.
- Wire and terminal quality certification, has passed UL certification, RoHS certification, CE certification.



SPECIFICATIONS

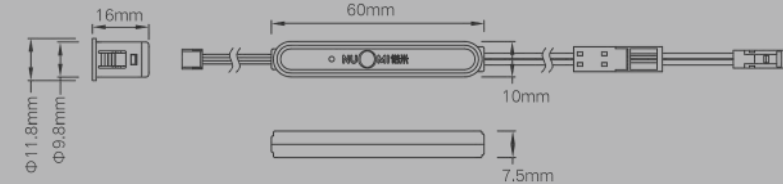
Item code	12282001
Size	0.3M/0.6M/1M
Color	Đen
Material	UL2468, 22AWG, 2pin

HAND SCAN SENSOR POWER SWITCH SET (2 WIRES INCLUDED)

- Infrared sensing mode.
- Using imported high-quality infrared photoelectric sensor.
- Equipped with door control & hand scanning function, use a toothpick to gently press the small hole on the shell to switch.
- American style detachable design, easy maintenance.



INSTALLATION DRAWING



SPECIFICATIONS

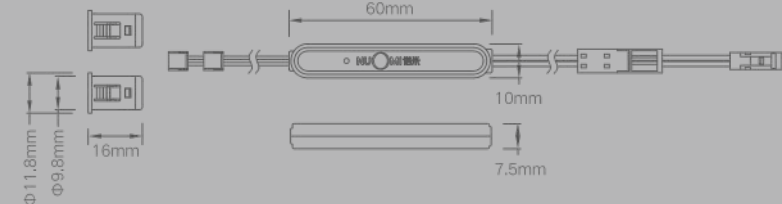
Item code	12222006
Size	Φ10x15mm
Color	Black
Output voltage	DC12-24V
Power	36W
Sensor distance	Sensing distance: hand sweep 5-8 cm, door gap 3-5 cm.
Installation	Mounted on the surface / integrated (hole diameter ϕ 12mm)

DOUBLE PORT SIGNAL SWITCH (3 WIRE COMBINED)

- Double door control switch, open the first door and turn on the light, close the second door and turn off the light.
- Infrared induction signal.
- Comply with RoHS for safety and environmental protection.
- Detachable design and easy maintenance.



INSTALLATION DRAWING



SPECIFICATIONS

Item code	12222002
Size	Φ10x15mm
Color	Black
Output voltage	DC12-24V
Sensor distance	Door gap 3-5cm
Installation	Mounted on the surface / integrated (hole diameter ϕ 10mm)



Kitchen Appliances & Accessories

SPICE RACK

SINK

WATER TAP

CABINET FUNCTION
HARDWARE
KITCHEN CABINET ACCESSORIES



KITCHEN CABINET ACCESSORIES

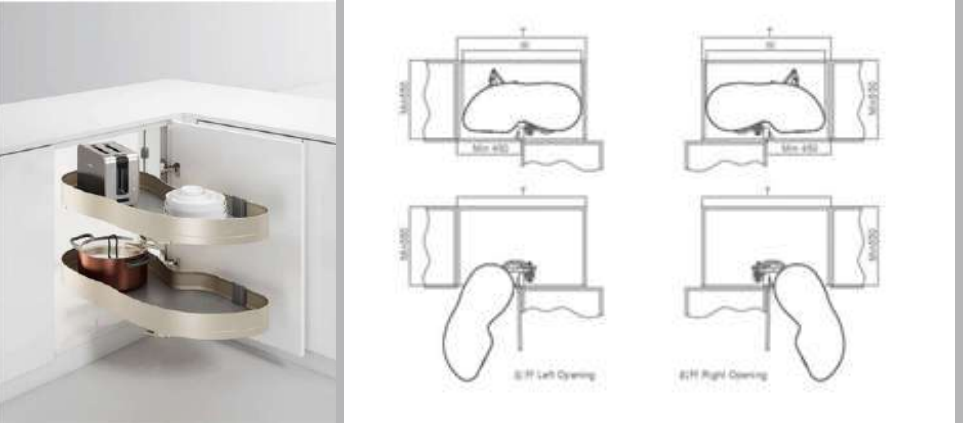
SPICE RACK



CODE	PRODUCT NAME	COLOR	SIZE
1010001B	LEFT OPEN SPICE FRAME (BIN 900)	GREY	(860-960)x530x520mm
1010180	LEFT OPEN SPICE FRAME (BIN 900)	GREY	(860-960)x530x520mm
1010002B	RIGHT OPEN SPICE FRAME (BIN 900)	GREY	(860-960)x530x520mm
1010180	RIGHT OPEN SPICE FRAME (BIN 900)	GREY	(860-960)x530x520mm



SPICE RACK



CODE	PRODUCT NAME	COLOR	SIZE
1020071	SHOCK ABSORBER SPICE FRAME - LEFT HAND OPEN (BOX 900)	GREY	830x500x(620-720)mm
1020072	SHOCK ABSORBER SPICE FRAME - LEFT HAND OPEN (BOX 900)	GREY	830x500x(620-720)mm



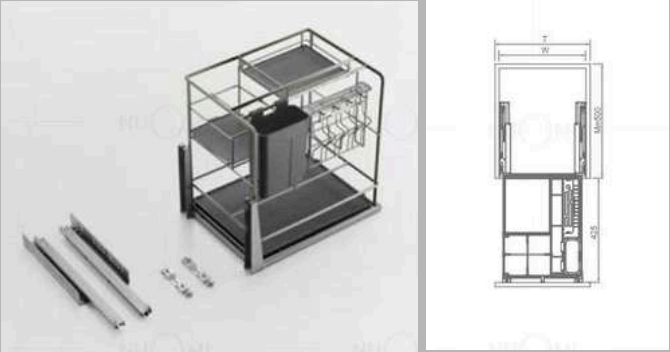


KITCHEN CABINET ACCESSORIES

PULL-OUT SPICE RACK



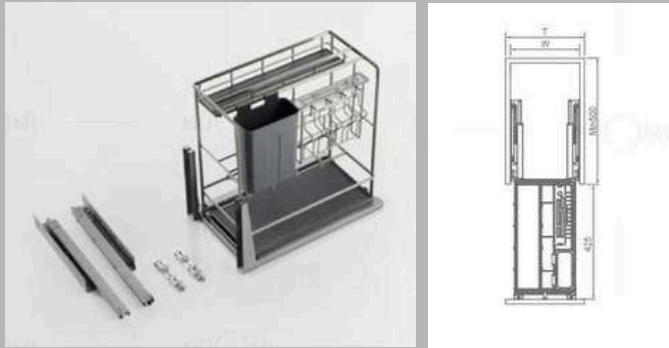
CODE	PRODUCT NAME	COLOR	SIZE
3054001H	SPICE RACK (BOX OF 400)	GREY - SILVER	364*460*480mm



PULL-OUT SPICE RACK



CODE	PRODUCT NAME	COLOR	SIZE
3053001H	SPICE RACK (BOX OF 400)	GREY - SILVER	264*460*480mm



OPPEN SINK SHELF



CODE	PRODUCT NAME	COLOR	SIZE
3052004	SINK SHELF (BOX OF 300)	GREY - SILVER	215*460*450mm





KITCHEN CABINET ACCESSORIES

PULL OUT SPICES - 2 LAYERS



CODE	PRODUCT NAME	COLOR	SIZE
3072001	2-TIER SPICE RACK (BOX OF 200	GREY	150*450*490mm



KITCHEN CABINET ACCESSORIES

OPEN SINK SHELF



CODE	PRODUCT NAME	COLOR	SIZE
3072004A	SINK SHELVES	GREY	215*460*450mm





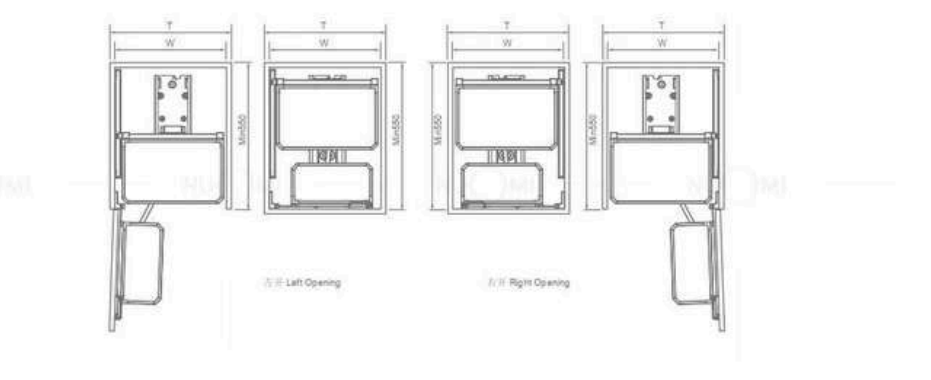
KITCHEN CABINET ACCESSORIES

OPEN DRY GOODS RACK - 4 TRAYS



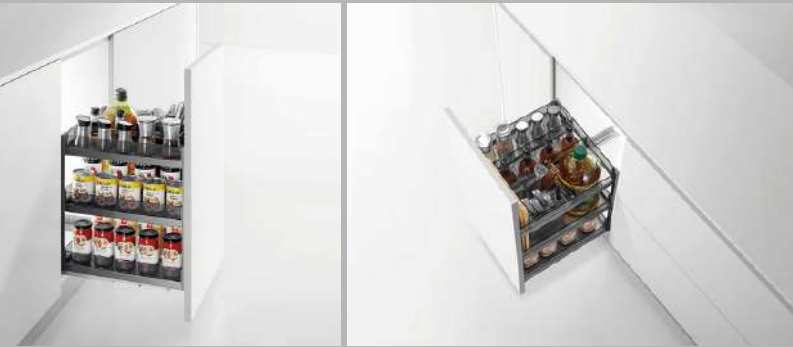
CODE	PRODUCT NAME	COLOR	SIZE
2020007B	MINI DRY FOOD CABINET FRAME WITH OPEN DOOR (BOX 450)	GREY	405*500*600mm above
2020077A	MINI OPEN-DOOR DRY FOOD TRAY (BOX 450)	GREY	405*500*600mm above

CODE	PRODUCT NAME	COLOR	SIZE
2020008B	MINI DRY FOOD CABINET FRAME WITH OPEN DOOR (BOX 600)	GREY	555*500*600mm above
2020078A	MINI DRY FOOD CABINET FRAME WITH OPEN DOOR (BOX 600)	GREY	555*500*600mm above



KITCHEN CABINET ACCESSORIES

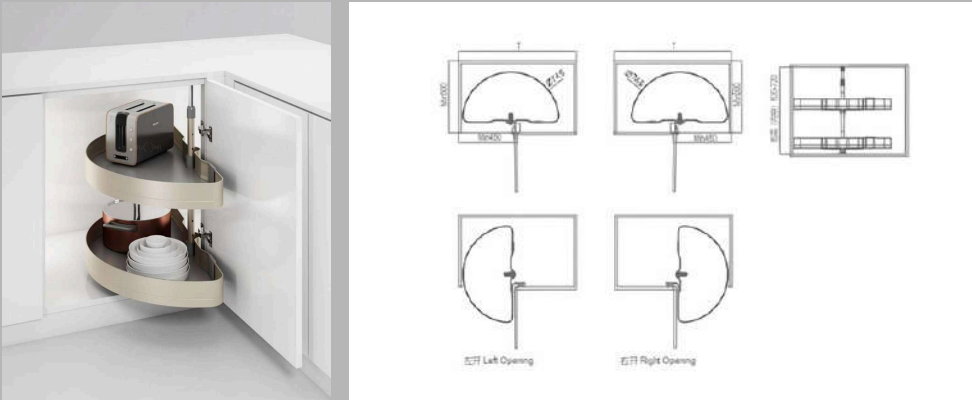
PULL-OUT SPICE RACK - 4 LEVELS



CODE	PRODUCT NAME	COLOR	SIZE
3074002A	4-TIER SPICE RACK (BOX OF 400)	GREY	350*450*490mm



ROTATING SHELF 180°



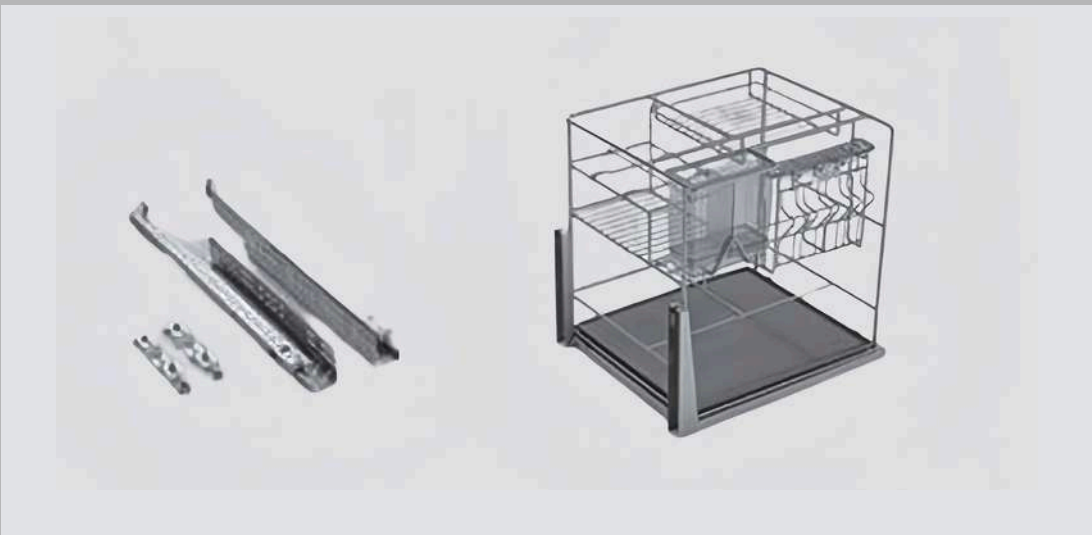
CODE	PRODUCT NAME	COLOR	SIZE
1030072	180° ROTATING SHELF (BOX 800)	GREY	742x402x(620-720)mm



SPICE RACK



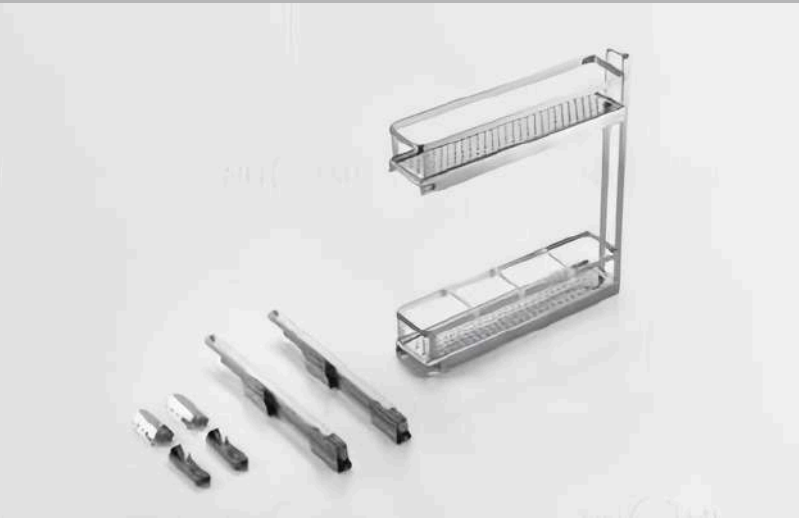
CODE	PRODUCT NAME	COLOR	SIZE
3164001	SPICE RACK (BOX OF 400)	GREY	335x460x495mm



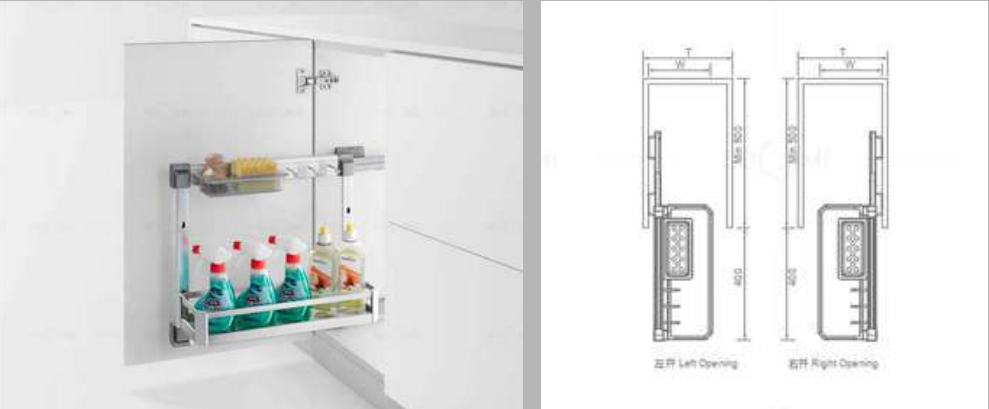
SPICE RACK



CODE	PRODUCT NAME	COLOR	SIZE
3121501H	SPICE RACK - IRON BAR (BOX 150)	GREY	110x480x540mm



SINK SHELVES



CODE	PRODUCT NAME	COLOR	SIZE
3062004	SINK SHELF (BODY 250)	GREY	215x460x450mm





KITCHEN CABINET ACCESSORIES

PULL BASKETS



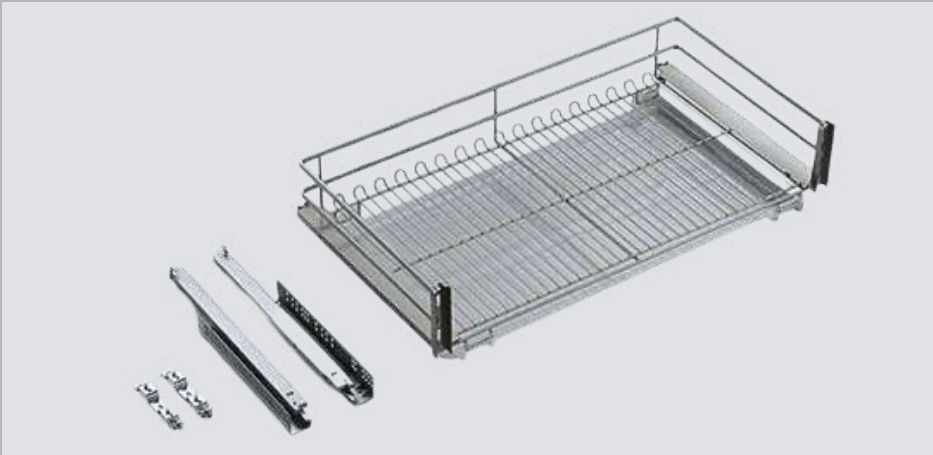
CODE	PRODUCT NAME	COLOR	SIZE
3058001H	3-SIDED STAINLESS STEEL BASKET FOR POTS AND PANS (BOX 800)	GREY	768*470*210mm



PULL BASKETS



CODE	PRODUCT NAME	COLOR	SIZE
3158002H	3-SIDED PULL-OUT BOWL BASKET (BOX 800)	GREY	768x470x210mm



SHELF BARS

BELECTROSTATIC SURFACE
MECHANICAL POLISHING TECHNOLOGY BY AXIT



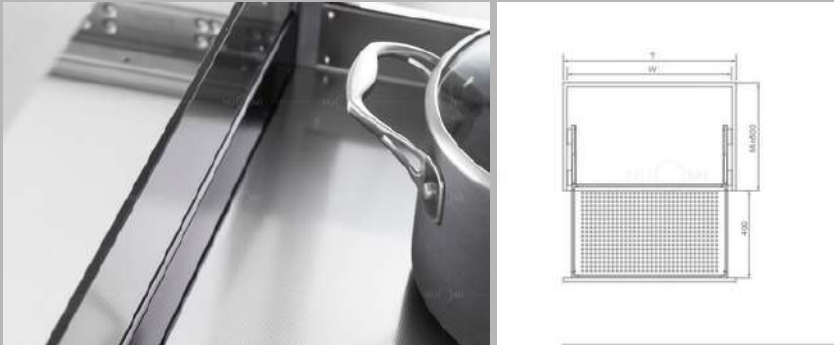
CODE	PRODUCT NAME	COLOR	SIZE
3078000	SHELF CABINET (BOX OF 800)	GREY	705*16*115mm





KITCHEN CABINET ACCESSORIES

PULL-OUT KITCHEN CABINET BASKET



CODE	PRODUCT NAME	COLOR	SIZE
3078001	KITCHEN CABINET BASKET (BOX 800)	GREY	764*450*170mm



KITCHEN CABINET ACCESSORIES

DISH BASKET



CODE	PRODUCT NAME	COLOR	SIZE
3078002	DISH BASKET (BOX OF 800)	GREY	764*450*170mm



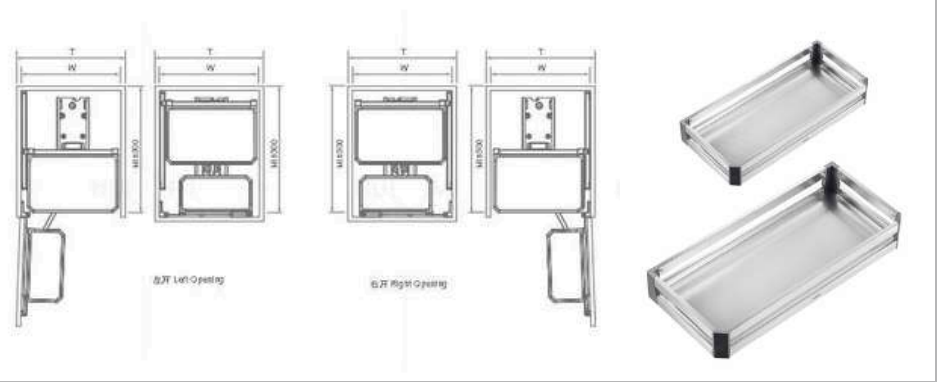


KITCHEN CABINET ACCESSORIES

5-TIER DRY GOODS RACK



CODE	PRODUCT NAME	COLOR	SIZE
2020006B	SPICE FRAME (BOX OF 600)	GREY	555x500x1780mm above
2020056	SPICE RACK (BOX OF 600)	GREY	555x500x1780mm above

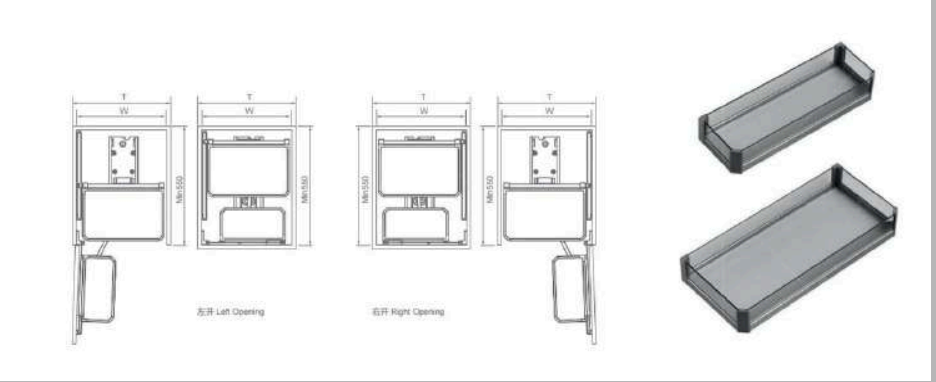


KITCHEN CABINET ACCESSORIES

5-TIER DRY GOODS RACK



CODE	PRODUCT NAME	COLOR	SIZE
2020005B	DRY FOOD FRAME 10 TRAYS (BOX OF 600)	GREY	555*500*1430mm above
2020075A	SET OF 10 DRY FOOD TRAYS (BOX OF 600)	GREY	555*500*1430mm above





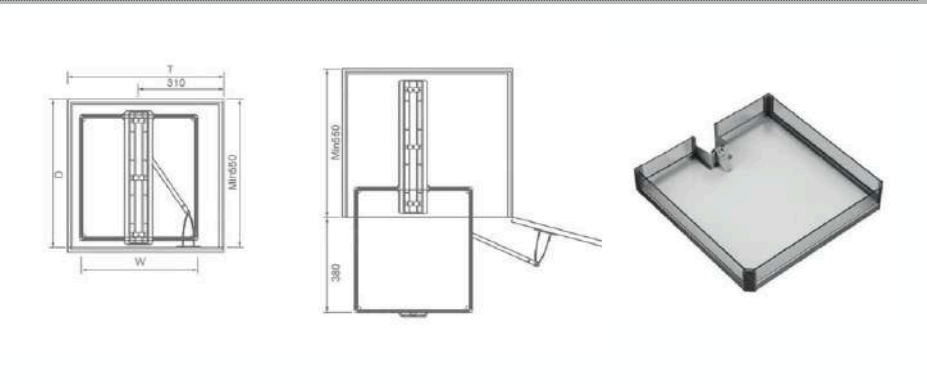
KITCHEN CABINET ACCESSORIES

5-TIER DRY GOODS RACK



CODE	PRODUCT NAME	COLOR	SIZE
2030002B	SET OF 5 DRY FOOD TRAYS (BOX OF 400)	GREY	(404-424)*500*1780mm
2030072A	SET OF 5 DRY FOOD TRAYS WITH OPENING DOOR 450	GREY	(404-424)*500*1780mm

CODE	PRODUCT NAME	COLOR	SIZE
2030002B	DRY GOODS CABINET RACK WITH 5 OPEN-DOOR SHELVES 600	GREY	(554-574)*500*1780mm
2030074A	SET OF 5 DRY FOOD TRAYS WITH OPEN DOOR 600	GREY	(554-574)*500*1780mm

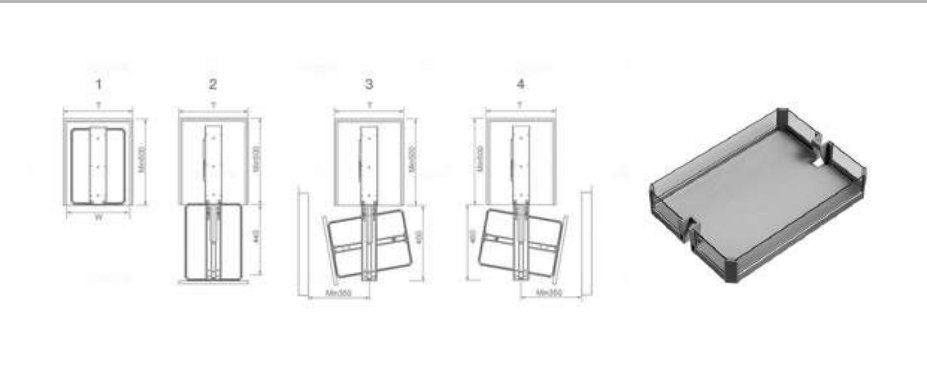


KITCHEN CABINET ACCESSORISES

180° 5-TIER ROTATING DRY GOODS RACK



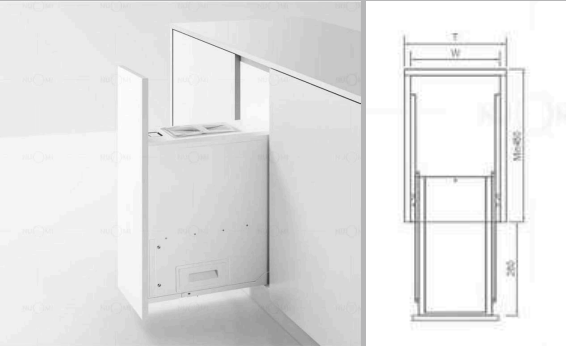
CODE	PRODUCT NAME	COLOR	SIZE
2020075A	SET OF 5 DRY FOOD TRAYS (BOX OF 400)	GREY	340*480*(1430-1730)mm
2010002B-A	180° ROTATING DRY FOOD FRAME 5 TRAYS (BOX OF 400)	GREY	340*480*(1430-1730)mm
2010002B-B	180° SWITCH SHELF SLIDE (BOX 400)	GREY	340*480*(1430-1730)mm





KITCHEN CABINET ACCESSORIES

RICE BARREL



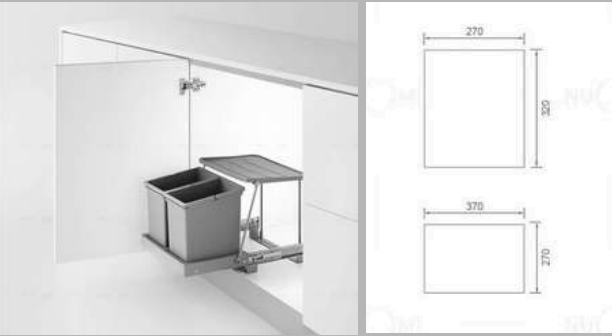
CODE	PRODUCT NAME	COLOR	SIZE
3090002	RICE BARREL (BOX OF 300)	WHITE	264x500x580mm

TRASH BIN



CODE	PRODUCT NAME	COLOR	SIZE
3090003	TRASH CAN (BIN 300)	GREY	250x455x355mm
3090004	TRASH CAN (BIN 300)	GREY	250x455x355mm

TRASH BIN - SINK



CODE	PRODUCT NAME	COLOR	SIZE
3090005	SINK TRASH CAN (BIN 400)	GREY	370x270x320mm

SINK MATERIAL

Has a safety hole to prevent water from overflowing into the bottle when you forget to turn off the anti-overflow faucet, the bottle will overflow, protecting the safety of the cabinet

Good quality 304 stainless steel material, does not affect food

Environmentally friendly anti-condensation coating, noise reduction process

Filter cage design filters food residue and prevents clogging

Double gasket design ensures safe watertightness

The decolorizing drain pipe is delicately designed to prevent sewer odors from draining back.



Double drain design, the double drain filter will not be clogged and the drainage will be easier. Precision manufacturing, durable and not deformed. Has strong sealing performance and prevents the appearance of pool water.



Double-layer filter design, no clogging, easy drainage, durable, anti-water leakage

DRAWN SINK

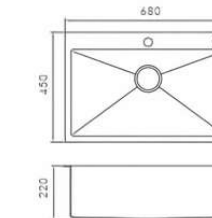


CABINET SINK



9018101Y
680*450*220mm

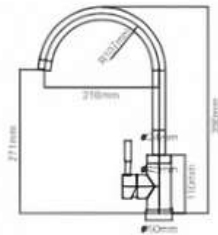
Single Sink
Material: SUS304
Cutout size:650x420mm



Including accessories



100201024
Plastic basket



10010001
Faucet inox SUS304

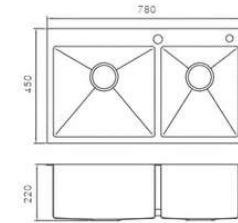
Material SUS304





9018201Y
780x450x220mm

Double sink
Material: SUS304
Cutout size: 750x420mm



Including accessories

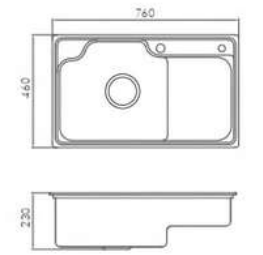


100201024
Plastic basket



9031117
760*460*230mm

Double sink
Material: SUS304
Cutout size: 740*440mm



Including accessories



10030237
Drainer



10040115
Cutting board



100201021
Inner basin



100201022
Hanging basket



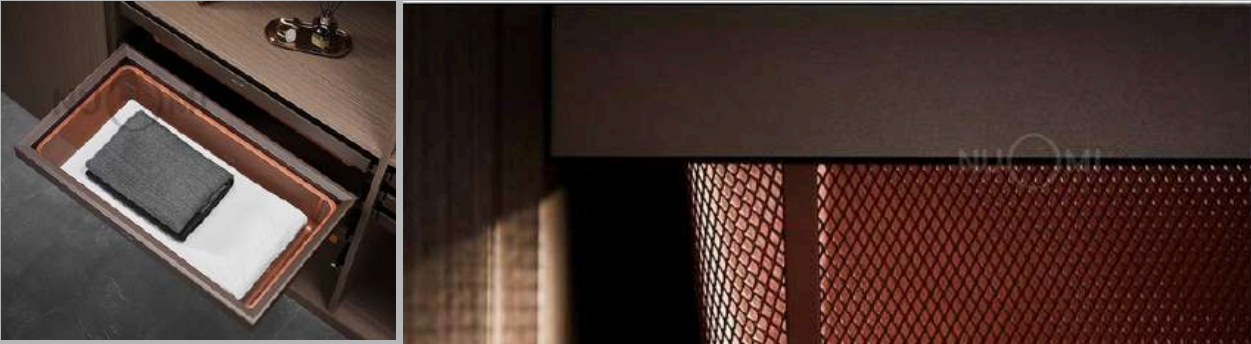
Wardrobe Accessories

High-quality artificial leather surface
Durable aluminum frame, easy to clean
Smart design, able to withstand heavy loads, suitable for all styles





SOFT CLOSE GRID BASKET



Item code	Color	Dimension (WxDxH)	Carcass
6090180	Bordeaux Red	764*469*184mm	760-768mm



SOFT CLOSE LEATHER BASKET



Item code	Color	Dimension (WxDxH)	Carcass
6090280	Bordeaux Red	764*469*169mm	760-768mm



UNDERWEAR SHELF



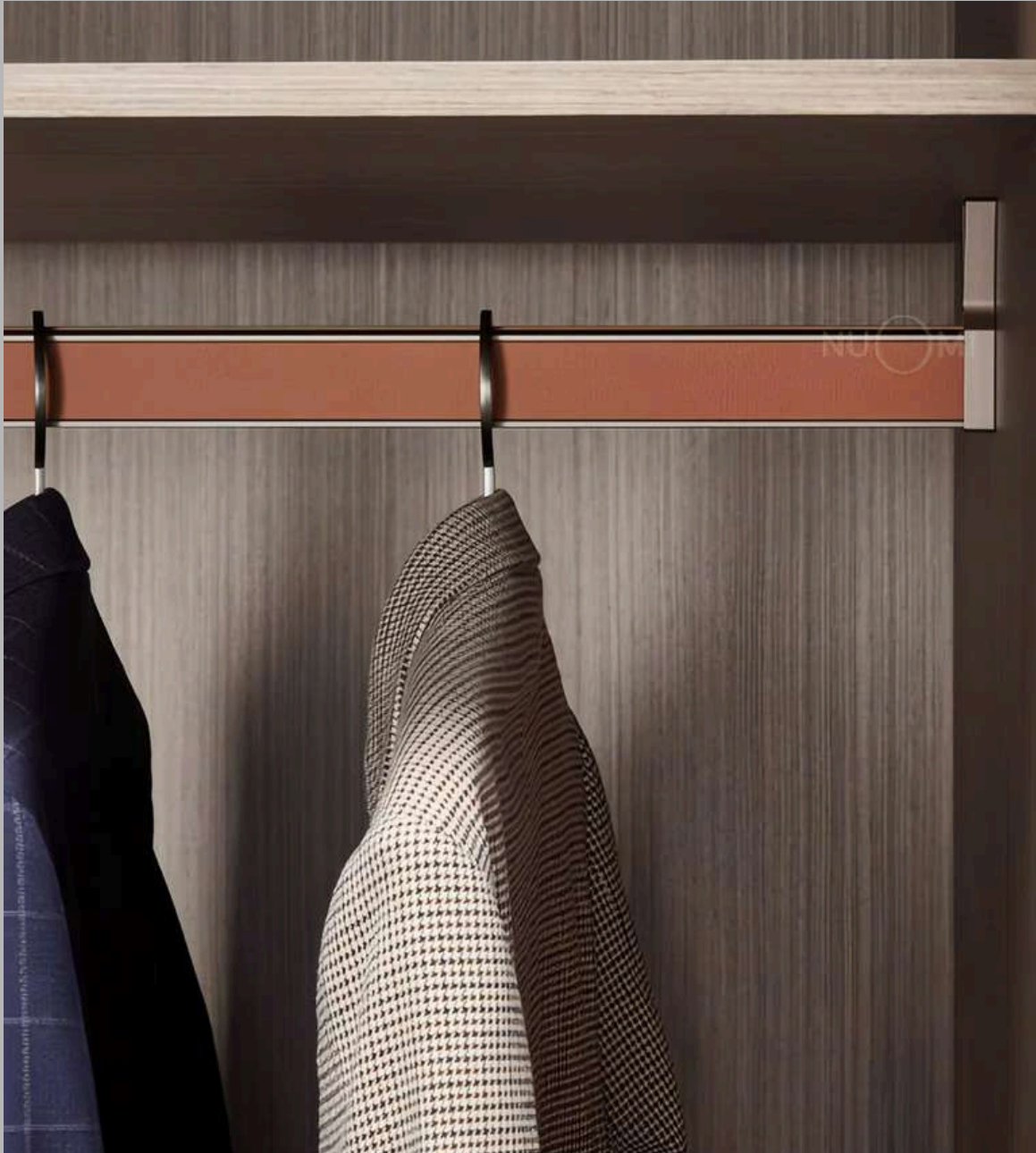
Item code	Color	Dimension (WxDxH)	Carcass
6090380	Bordeaux Red	764*469*85mm	760-768mm



SOLT CLOSE DECORATIONS SHELF



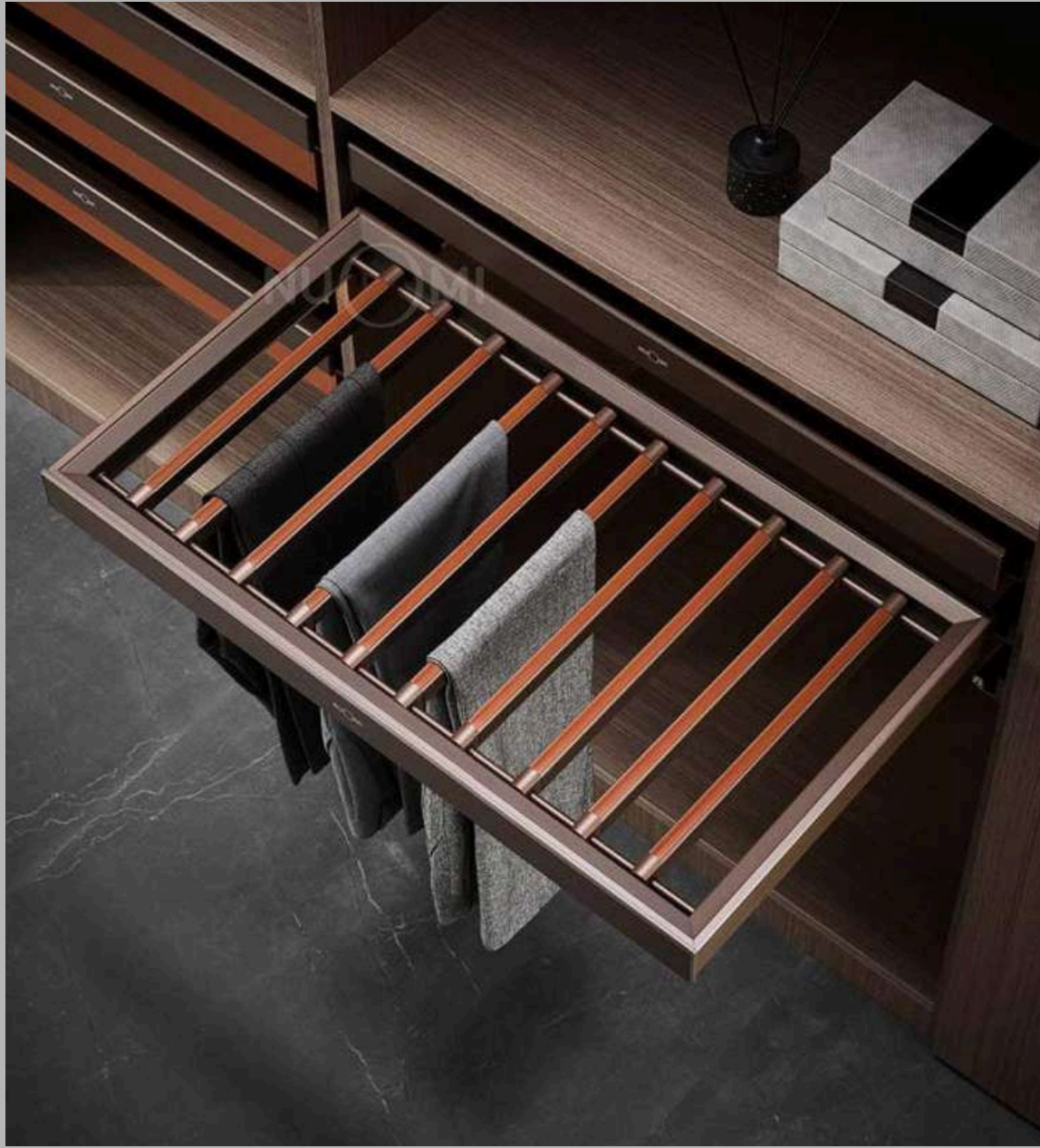
Item code	Color	Dimension (WxDxH)	Carcass
6090680	Bordeaux Red	764*469*65mm	760-768mm



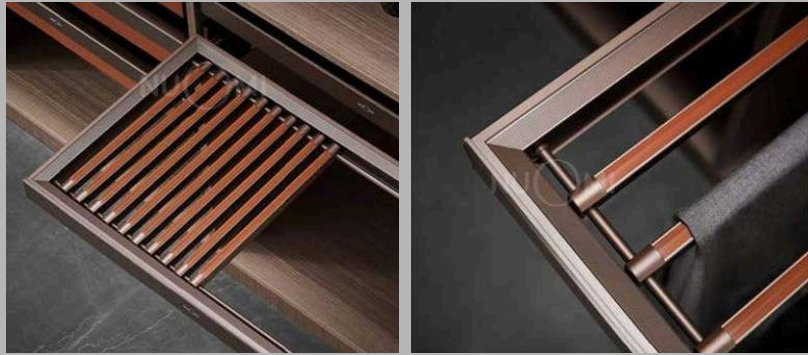
CLOTHES RAIL COVERED LEATHER



Item code	Color	Dimension (WxDxH)	Carcass
6094580	Bordeaux Red	...	764mm



SOFT CLOSE TROUSERS RACK



Item code	Color	Dimension (WxDxH)	Carcass
6090480	Bordeaux Red	764*469*65mm	760-768mm

ROTATING MIRROR



Item code	Color	Dimension (WxDxH)	Carcass
6092400	Brown frame	90*460*1280mm	>280mm

ROTATING MIRROR



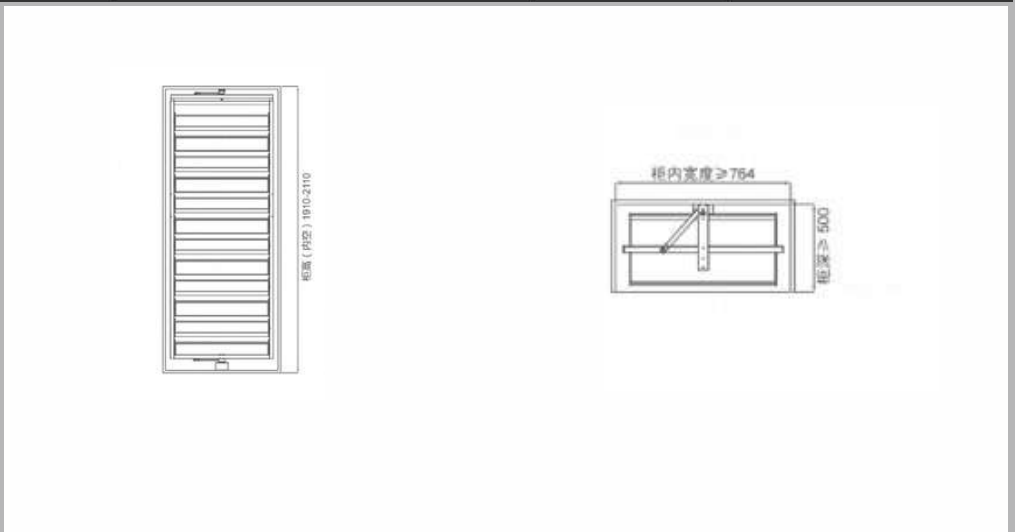
Item code	Color	Dimension (WxDxH)	Carcass
6092502	Brown frame	18*320*900mm	>400mm



360°ROTATABLE MULTI LAYER SHOES RACK



ITEM CODE	PRODUCT	COLOR	DIMENSION
6092303-A	360°ROTATABLE MULTI LAYER SHOES RACK	Bordeaux Red	700*360*(1350-1550mm)

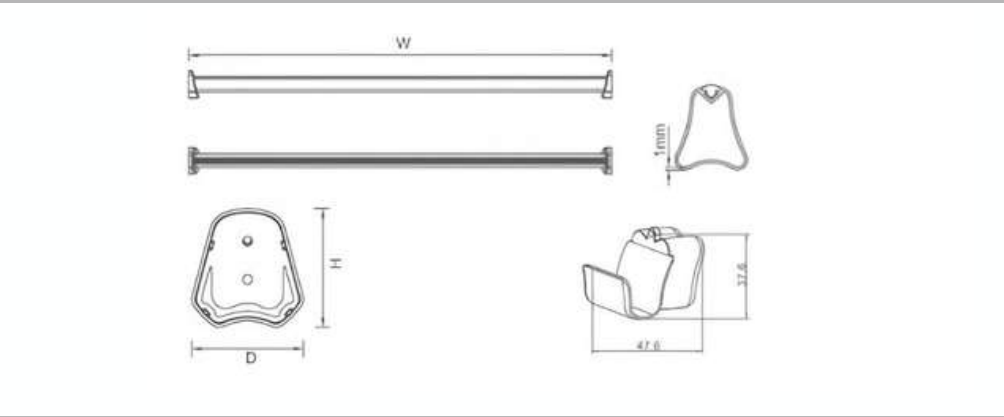


HANGING ROD

Weight capacity: 40kg



Item code	PRODUCT	Color	Dimension
6092600	HANGING ROD	Bordeaux Red	3000mm
6092601	HANGING ROD BASE	Bordeaux Red	3000mm
6092602	HANGING ROD BASE	Bordeaux Red	3000mm





B01/ HANDLE



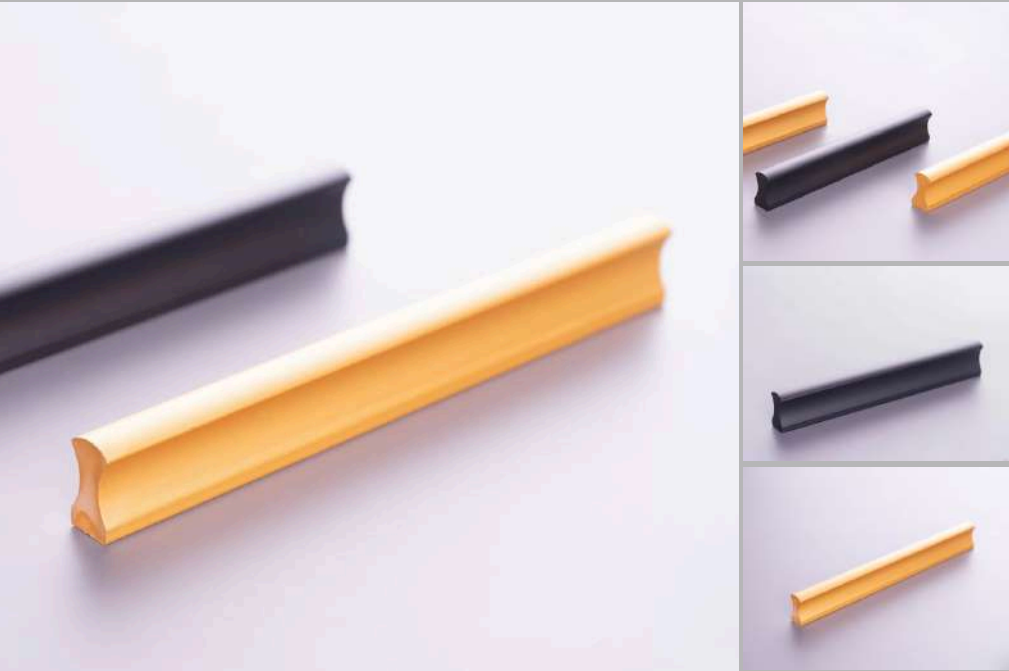
Item code	PRODUCT	Color	Size
B01	HANDLE (HOLE SPACING 320MM)	Black	350mm
B01	HANDLE (HOLE SPACING 320MM)	Yellow	350mm
B01	HANDLE (HOLE SPACING 447MM)	Black	5500mm
B01	HANDLE (HOLE SPACING 447MM)	Yellow	550mm
B01	HANDLE (HOLE SPACING 447MM)	Black	1000mm
B01	HANDLE (HOLE SPACING 447MM)	Yellow	1000mm

B4304/ HANDLE



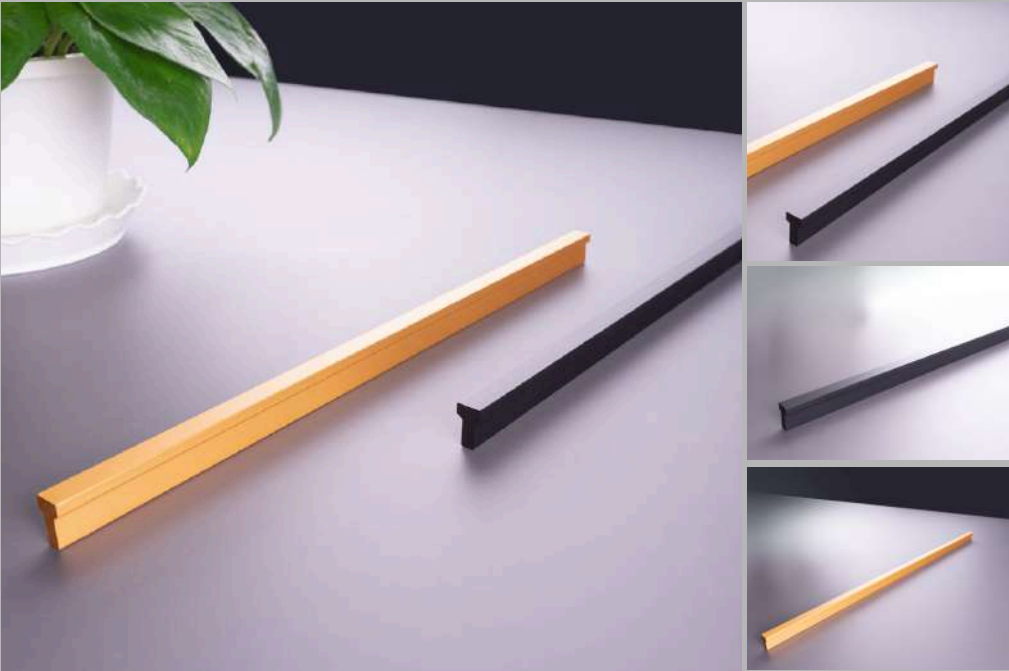
Item code	PRODUCT	Color	Size
B4304	HANDLE (HOLE SPACING 96MM)	Black	147mm
B4304	HANDLE (HOLE SPACING 96MM)	Yellow	147mm
B4304	HANDLE (HOLE SPACING 128MM)	Black	195mm
B4304	HANDLE (HOLE SPACING 128MM)	Yellow	195mm
B4304	HANDLE (HOLE SPACING 160MM)	Black	227mm

B4403/ HANDLE



Item code	Product	Color	Size
B4403	HANDLE (HOLE SPACING 96MM)	Black	110mm
B4403	HANDLE (HOLE SPACING 96MM)	Yellow	110mm
B4403	HANDLE (HOLE SPACING 128MM)	Black	140mm
B4403	HANDLE (HOLE SPACING 128MM)	Yellow	140mm
B4403	HANDLE (HOLE SPACING 96MM)	Yellow	150mm

B16/ HANDLE(1316)



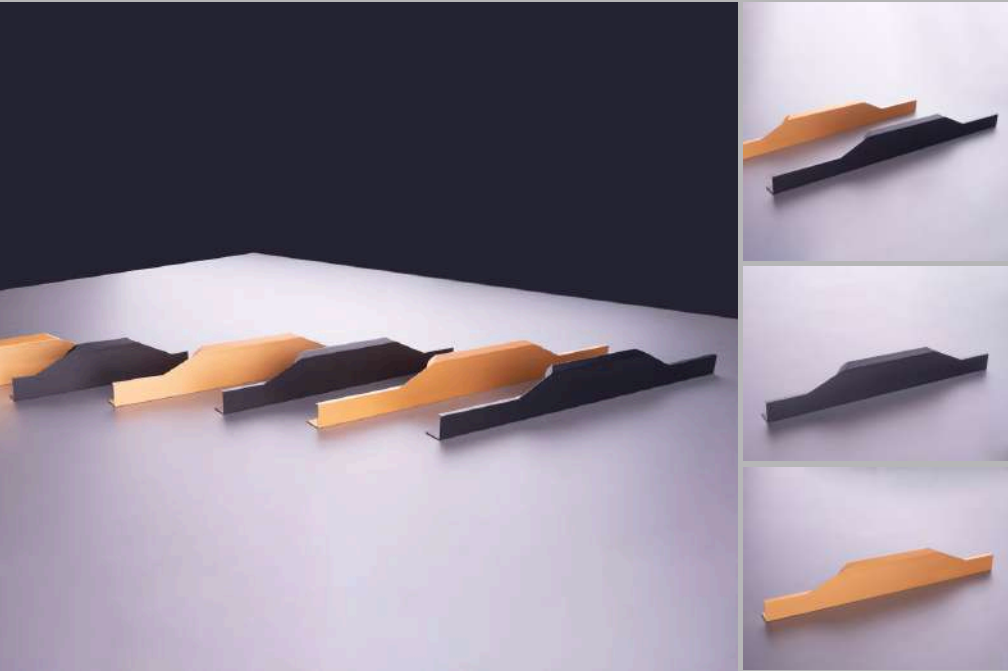
Item code	PRODUCT	Color	Size
B16	HANDLE (HOLE SPACING 287MM)	Black	350mm
B16	HANDLE (HOLE SPACING 287MM)	Yellow	350mm
B16	HANDLE (HOLE SPACING 447MM)	Black	550mm
B16	HANDLE (HOLE SPACING 447MM)	Yellow	550mm
B16	HANDLE (HOLE SPACING 447MM)	Black	1000mm
B16	HANDLE (HOLE SPACING 447MM)	Yellow	1000mm

B12/ HANDLE(1312)



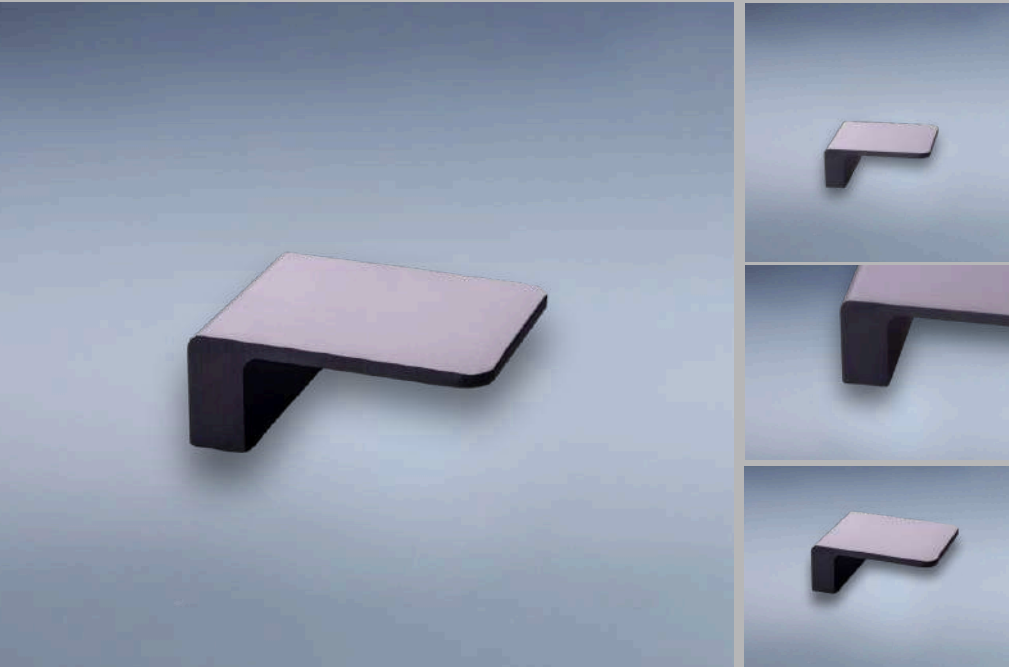
Item code	PRODUCT	Color	Size
B12	HANDLE (HOLE SPACING 160MM)	Black	250mm
B12	HANDLE (HOLE SPACING 224MM)	Yellow	350mm
B12	HANDLE (HOLE SPACING 224MM)	Black	350mm
B12	HANDLE (HOLE SPACING 700MM)	Yellow	800mm
B12	HANDLE (HOLE SPACING 700MM)	Black	800mm

B5105/ HANDLE



Item code	PRODUCT	Color	Size
B5105	HANDLE (HOLE SPACING 128MM)	Black	160mm
B5105	HANDLE (HOLE SPACING 128MM)	Yellow	160mm
B5105	HANDLE (HOLE SPACING 192MM)	Black	260mm
B5105	HANDLE (HOLE SPACING 192MM)	Yellow	260mm
B5105	HANDLE (HOLE SPACING 256MM)	Black	360mm
B5105	(KHOẢNG CÁCH LỖ 256MM)	Yellow	360mm

B-4803(32-40)/ TAY NẮM



F32217/ TAY NẮM



F055/ HANDLE



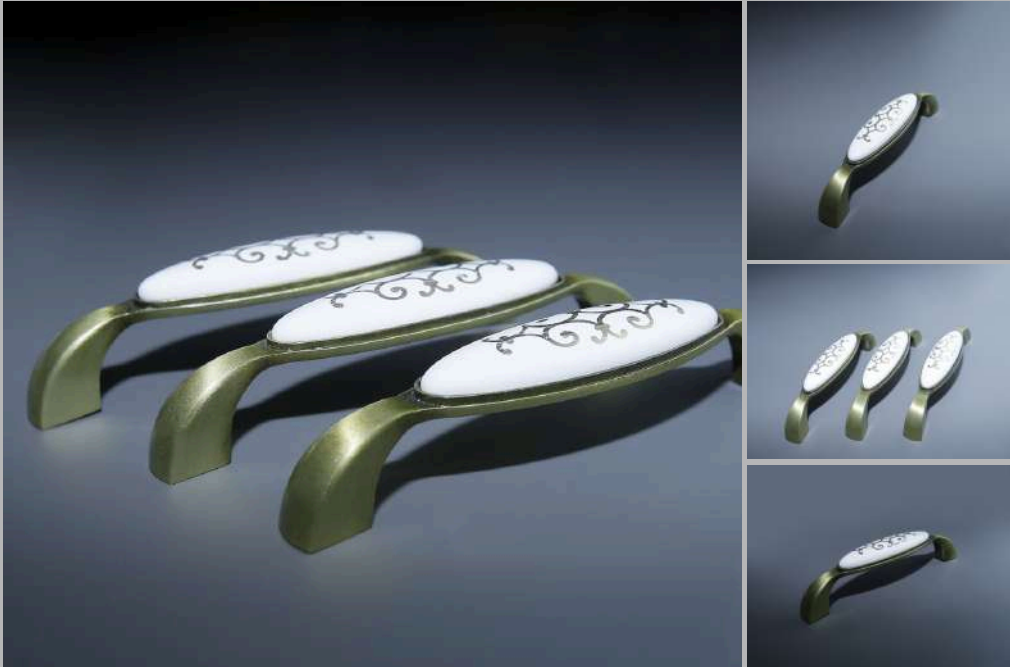
739/ HANDLE



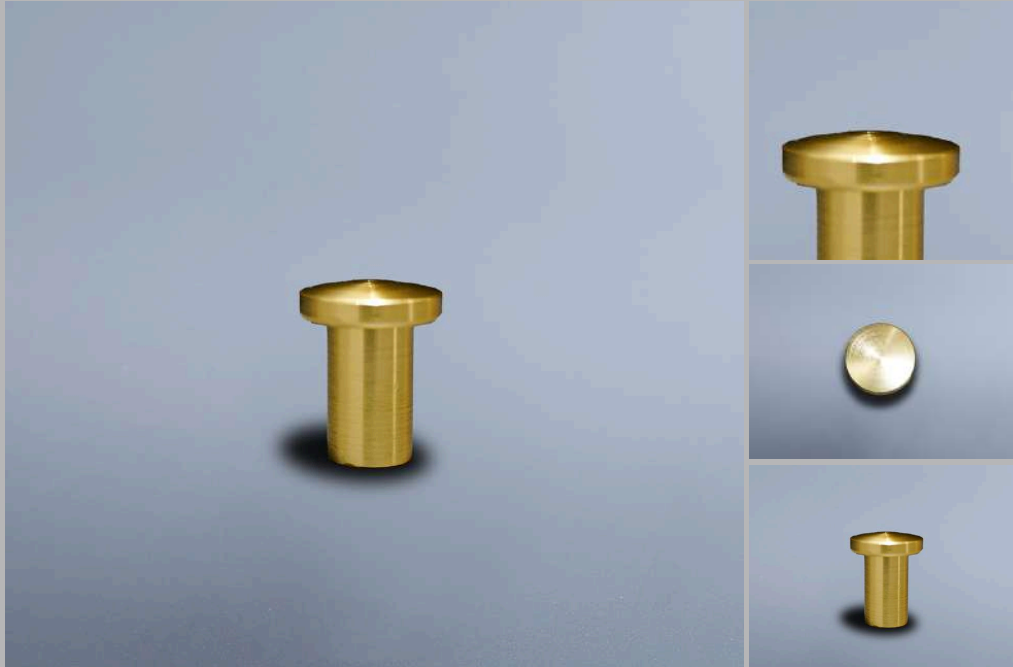
F8021/ HANDLE



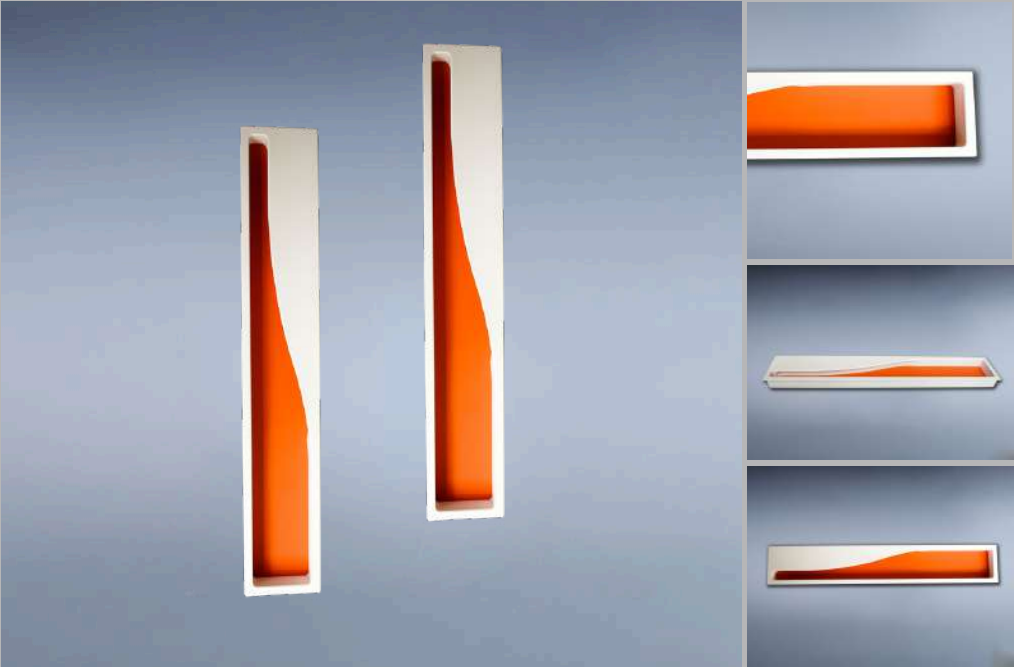
F031/ HANDLE



737/ HANDLE



7435/ HANDLE



Leigh: 300mm



HANDLE



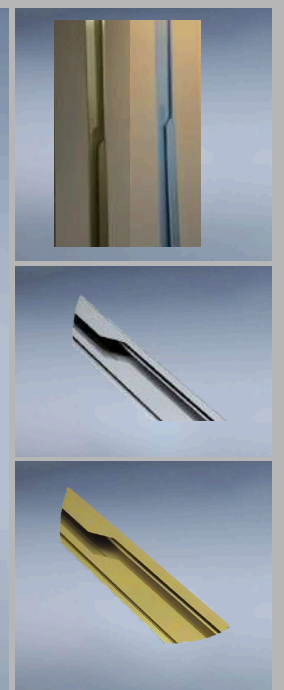
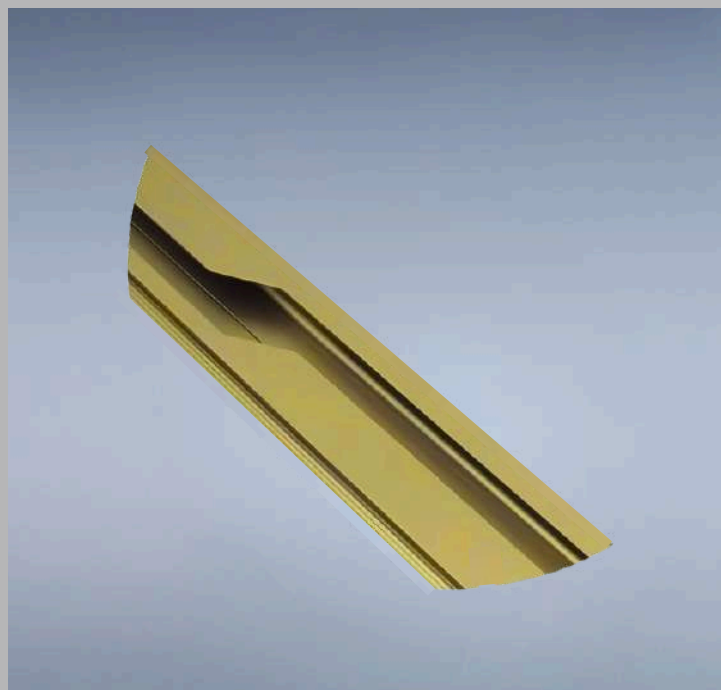
7012/ HANDLE



2.78mm



M95/ HANDLE



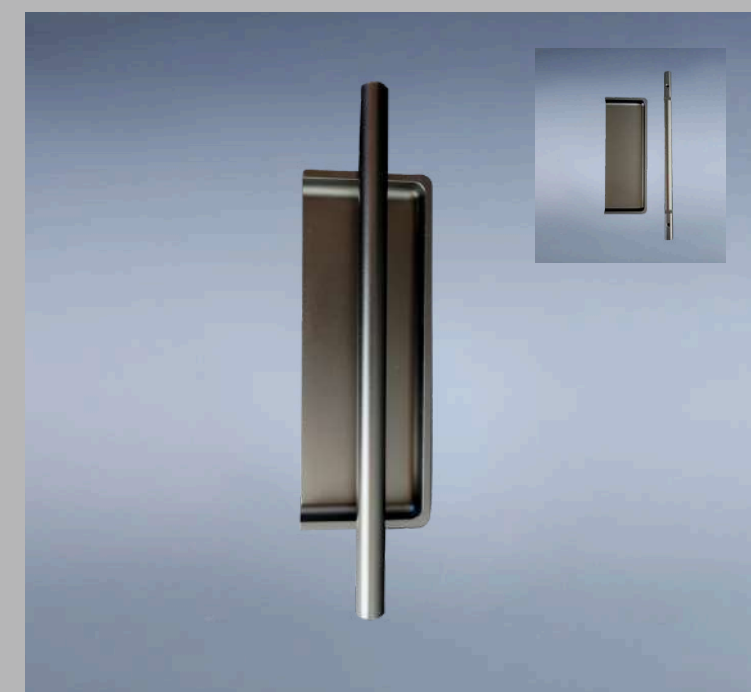
B7463/ HANDLE



9248-64/ HANDLE



749/ HANDLE



750/ HANDLE

